

DFS CDMA
Professional CDMA Software



Requirements:

- Wi-Fi router (not access point) with fast internet (~2Mb)
- PC or laptop with Windows XP/Vista/Windows 7
- Apple USB cable and iTunes
- Both Apple device and PC/laptop must be connected to the same router and have same sub-domain address (like 192.168.0.xxx):

PC IP: 192.168.0.xxx, iPhone IP: 192.168.1.xxx - wrong connection

PC IP: 192.168.0.xxx, iPhone IP: 192.168.0.xxx - correct connection

- Your Apple device must be Jailbroken, Cydia and OpenSSH must be installed.

How to connect Apple device to DFS

Install **Jailbroken** (Absinthe or redsn0w)

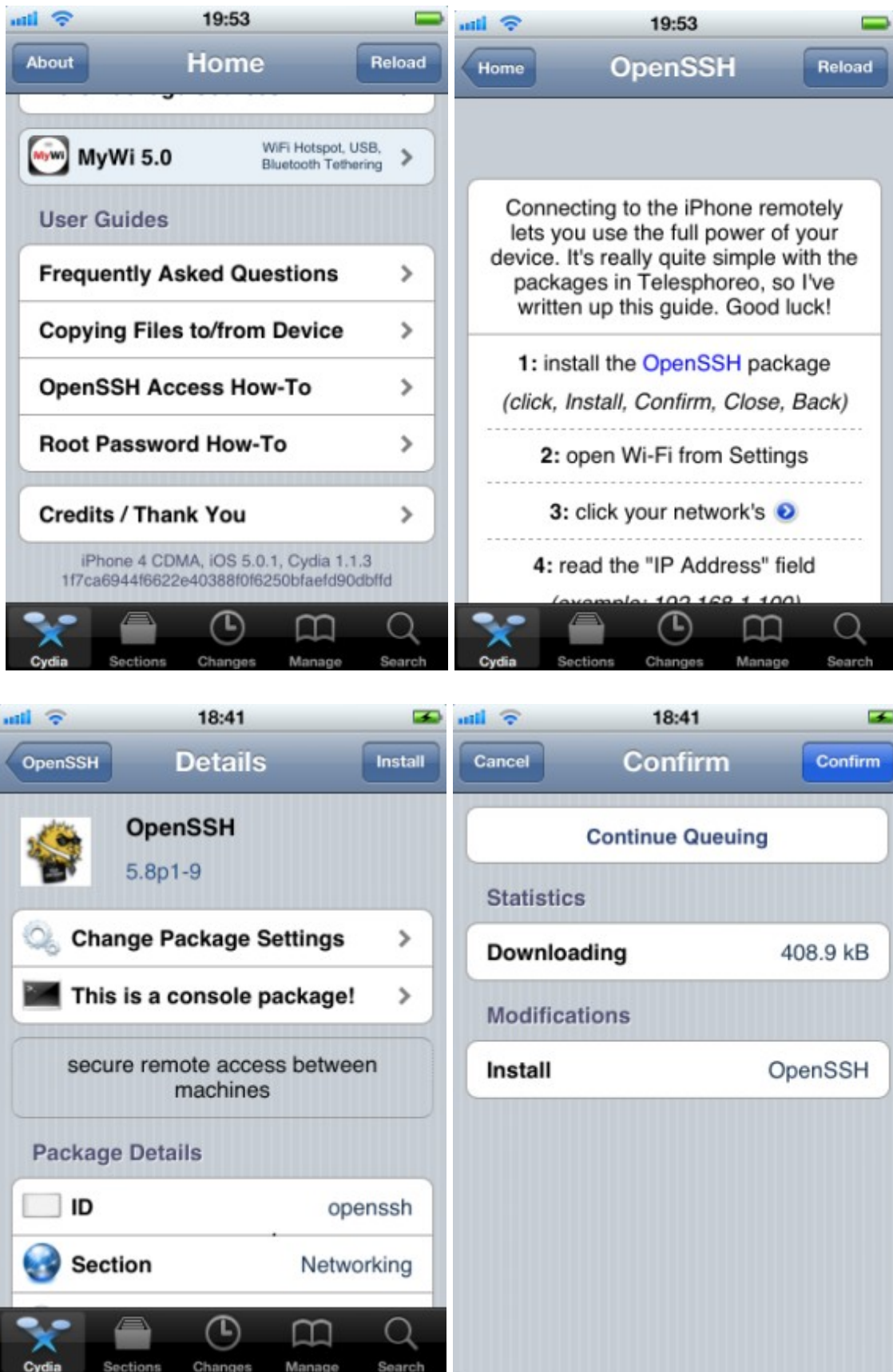
Connect **Apple** to **Wi-Fi**:



Run **Cydia** 

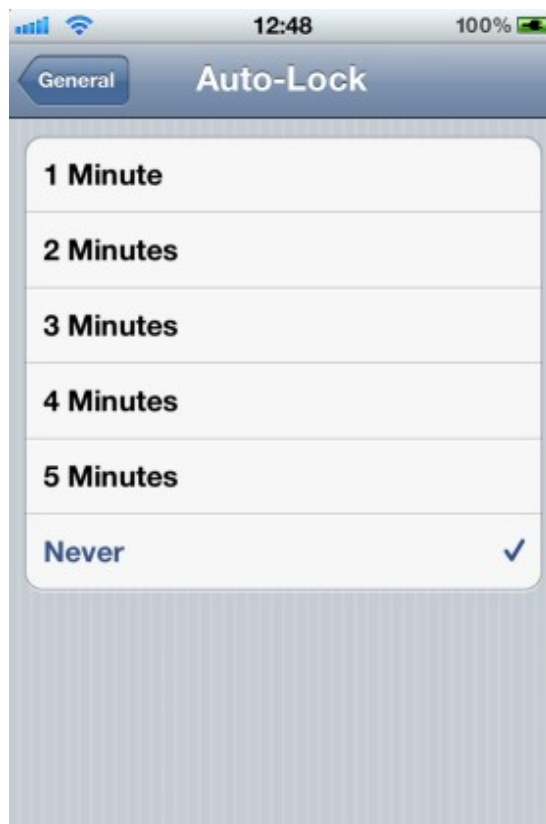


OpenSSH Access How-To and install the **OpenSSH** package:



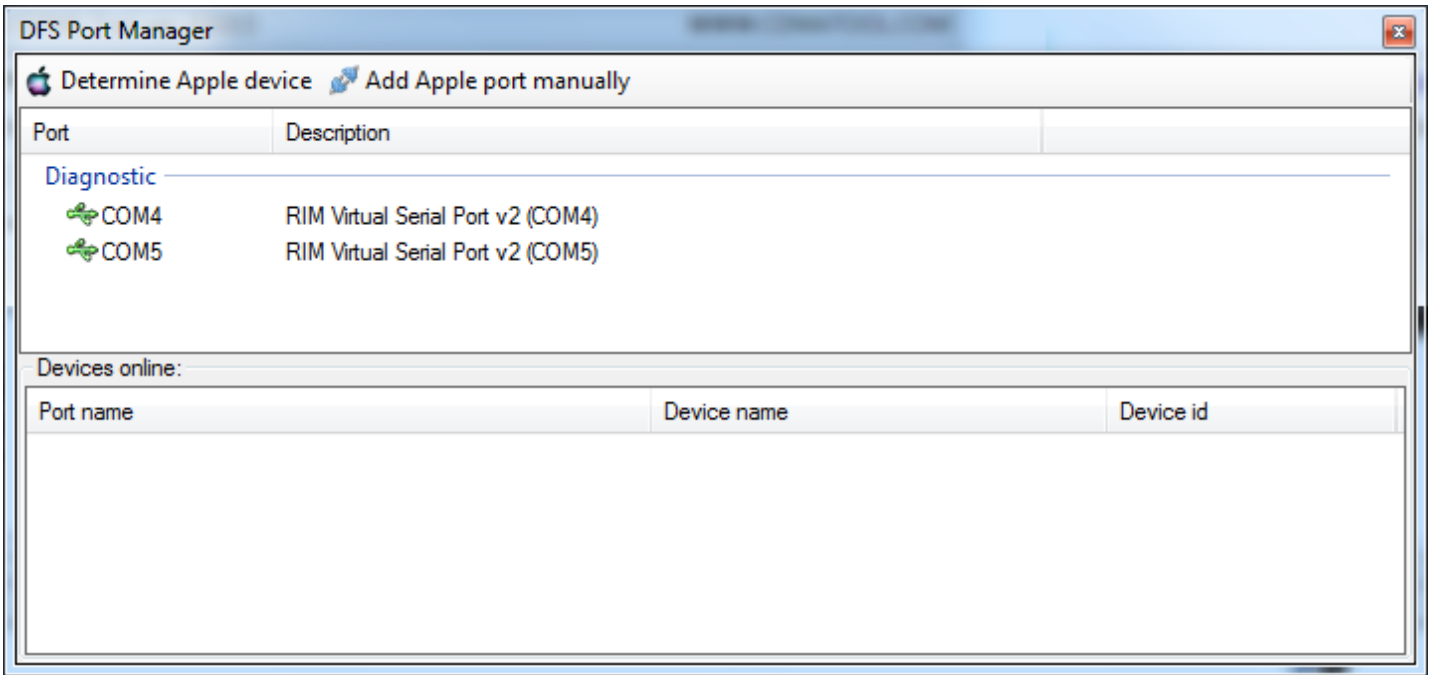


Connect **iPhone 4 CDMA** to USB and **Wi-Fi**.
- Disable **Auto-Lock** (Settings -> General -> Auto-Lock -> Never)



Connect to Apple

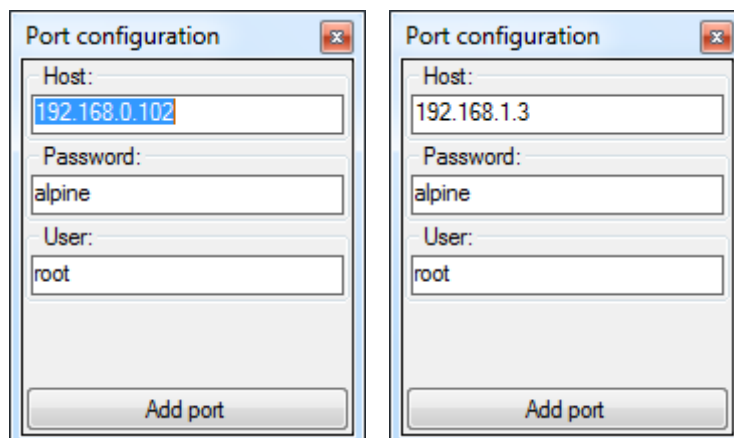
Run DFS CDMA Tool. Open DFS Ports Manager:



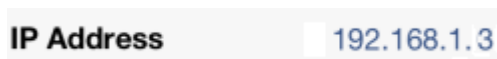
- Click on button **Determine Apple device** to automatically building a port:



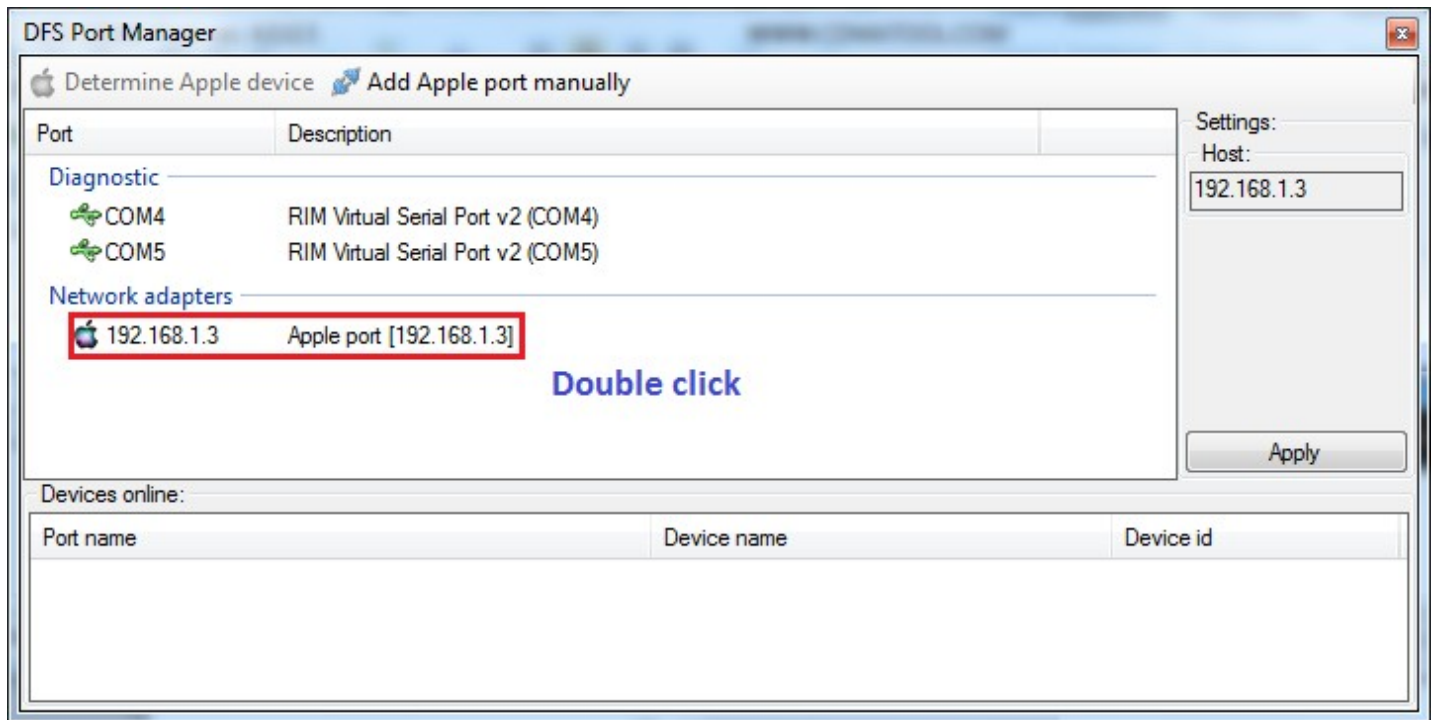
Or Click on button **Add Apple port manually** for manually building a port:



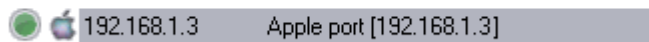
In manual mode, enter the IP iPhone (*Settings - Wi-Fi Networks*)



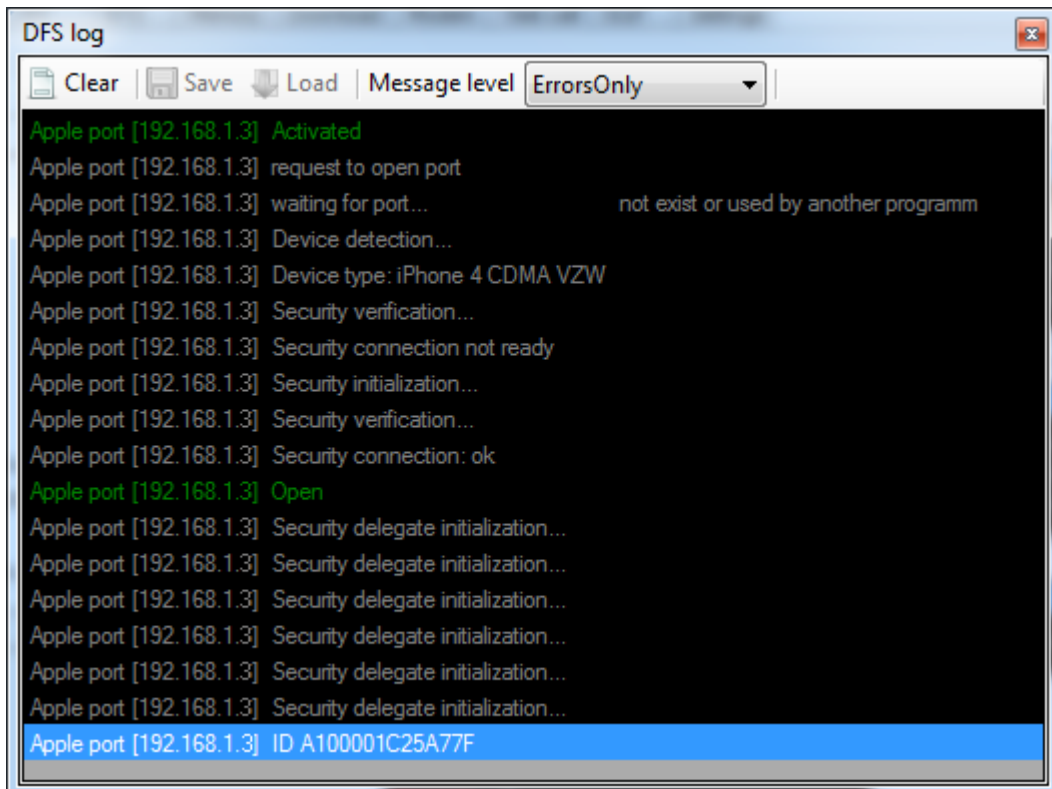
- Once port successfully created **double clicks** on **Apple port** to add it in to active ports list*



Network adapters



- Wait for device detected (*ONLINE* indicator is **GREEN**) Online Mode EQF

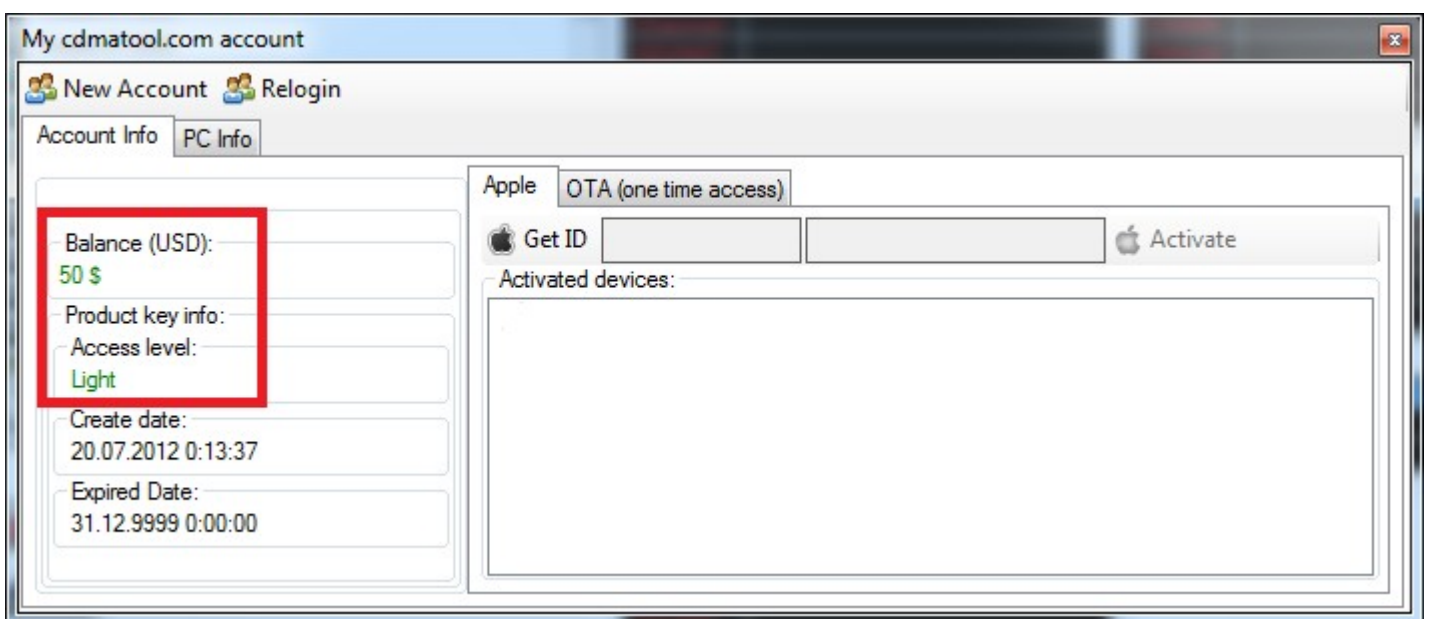


Activate account

Go to the **Account** management:



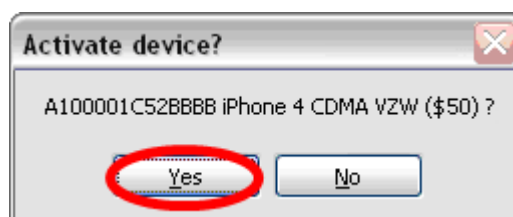
Minimum required balance for **Apple** programming is **\$50** and Access level «**Light**»

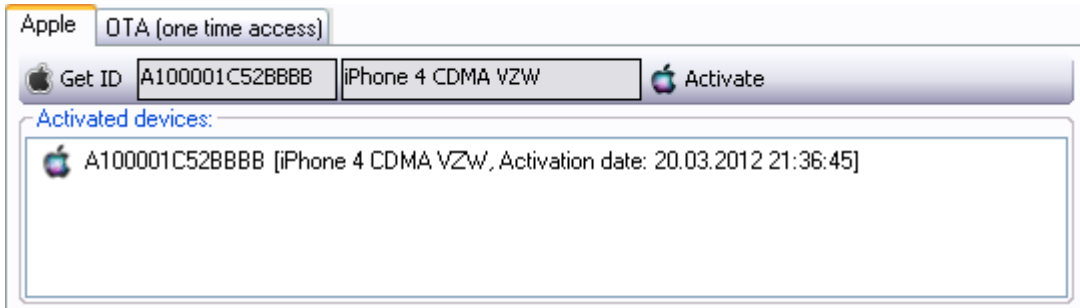


- Click on **Get ID** button



- Click on **Activate**, then **Yes** to confirm





You are now ready for programming Apple

GENERAL – NAM – DATA – MIP



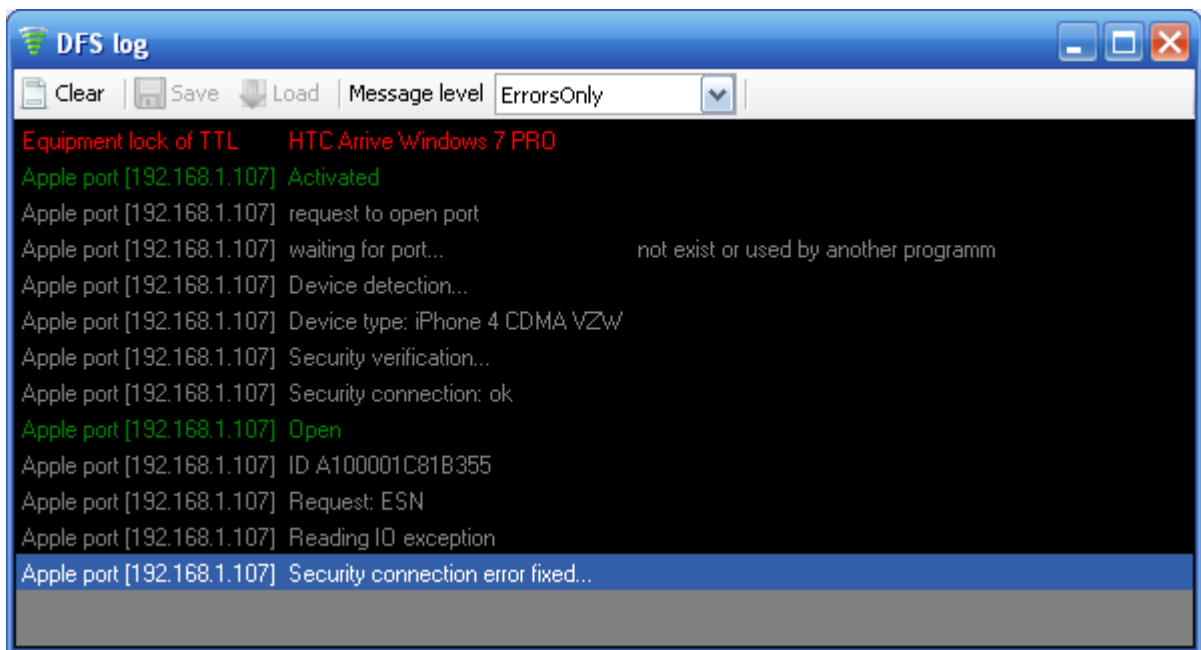
Always use «**Close Port**» or «**Restart**» button to disconnect device when programming complete.

Connection errors

Does not building a port to connect:

- * If Apple port building fails and port cannot be created:
 - make sure **Jailbreak** done successfully and **OpenSSH** installed correctly
 - make sure your device and your PC is on the same subnetwork
 - make sure device connected via cable to PC and drivers installed correctly
 - make sure device connected to Wi-Fi

Error Reading IO exeption \ Security connection error fixed:



Turn on "**Airplane Mode**" for 20-30 minutes in the Apple. Then shut down "**Airplane Mode**" and try to connect to the phone.

