

Powered by Telecom Logic group

# DFS CDMA Professional CDMA Software

## Copper Valley



## Connect iPhone 4 CDMA to DFS

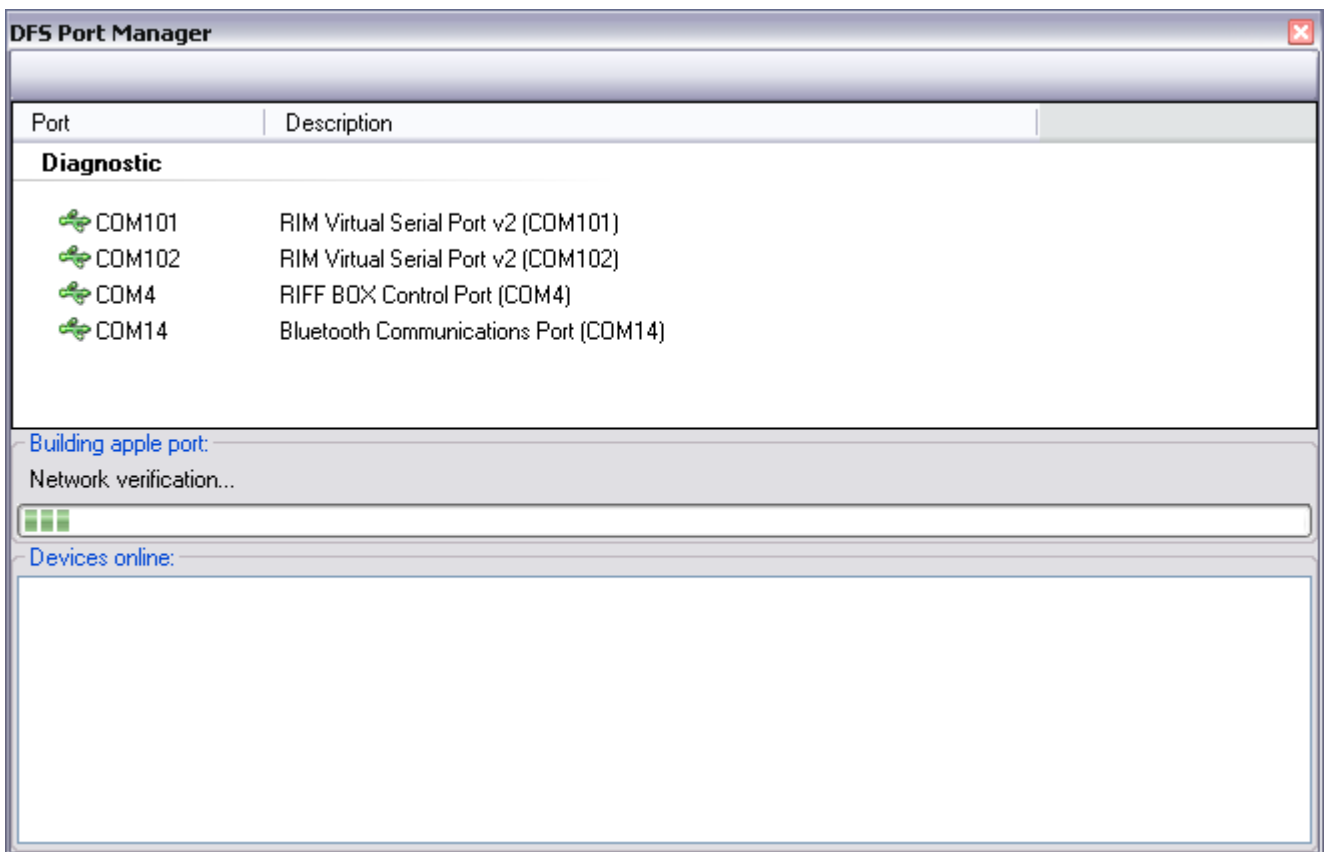
1. Jailbreak **iPhone 4 CDMA**
2. Install **openSSH**
3. Connect **iPhone 4 CDMA** to **Wi-Fi**:



4. Connect **iPhone 4 CDMA** to **USB-cable**:



5. Run **CDMA Tool**. Open **Ports Manager** from DFS:



- Network verification...





**Network adapters**

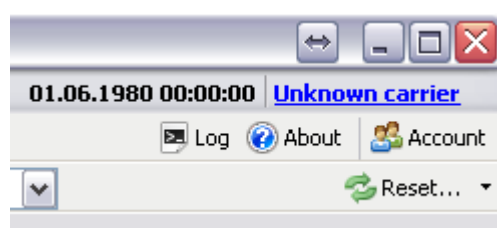
 192.168.1.103 Apple port [192.168.1.103]

- After building apple port the **iPhone 4 CDMA**, you need to add the Port (double-click)

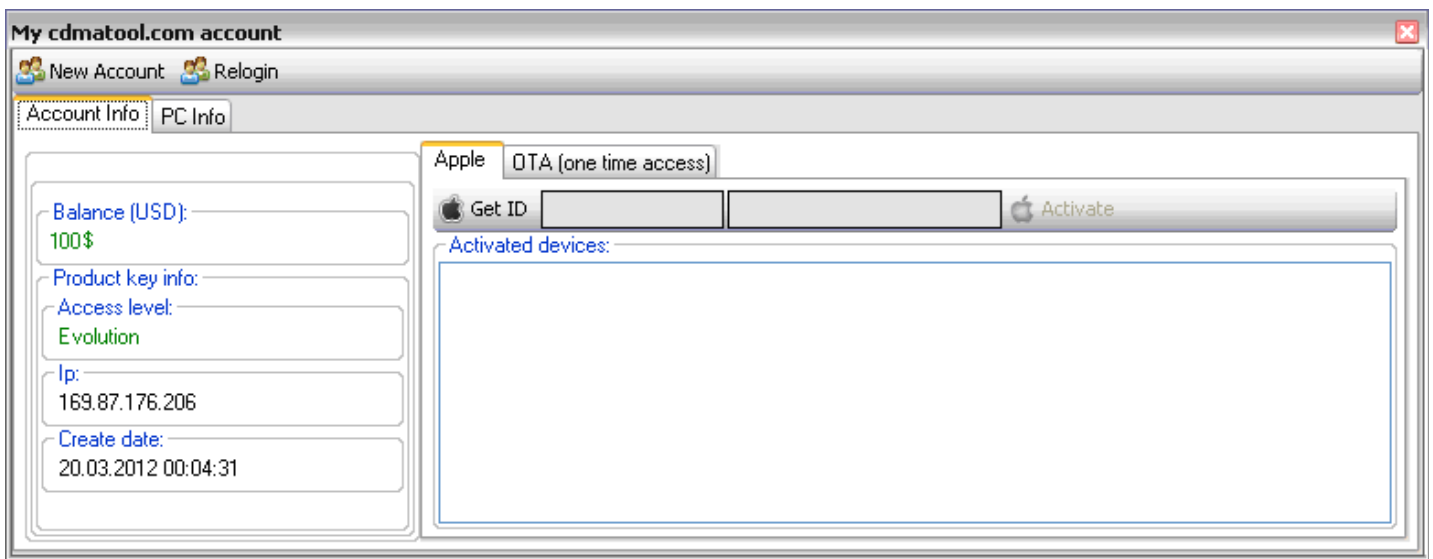
**Network adapters**

  192.168.1.103 Apple port [192.168.1.103]

6. Go to the **Account** management:



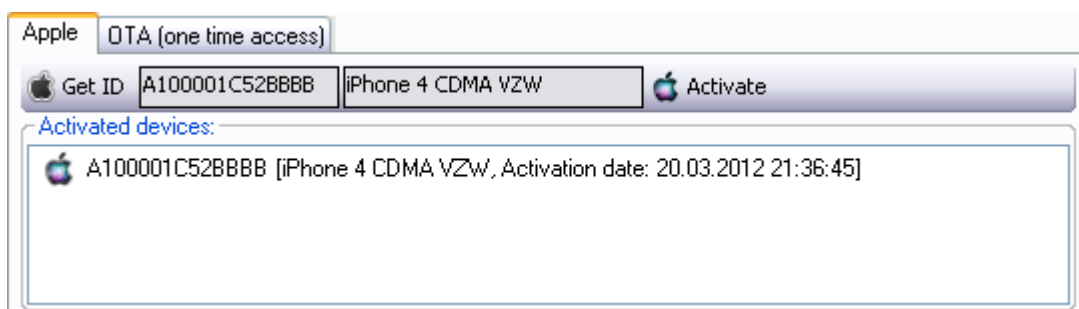
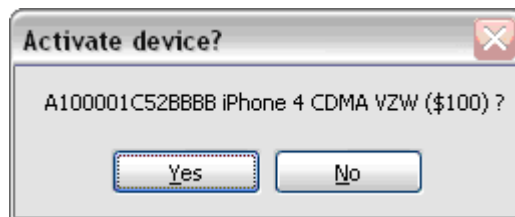
On the balance (\$100) shall be the amount necessary for the operation:



- Push the button **Get ID**

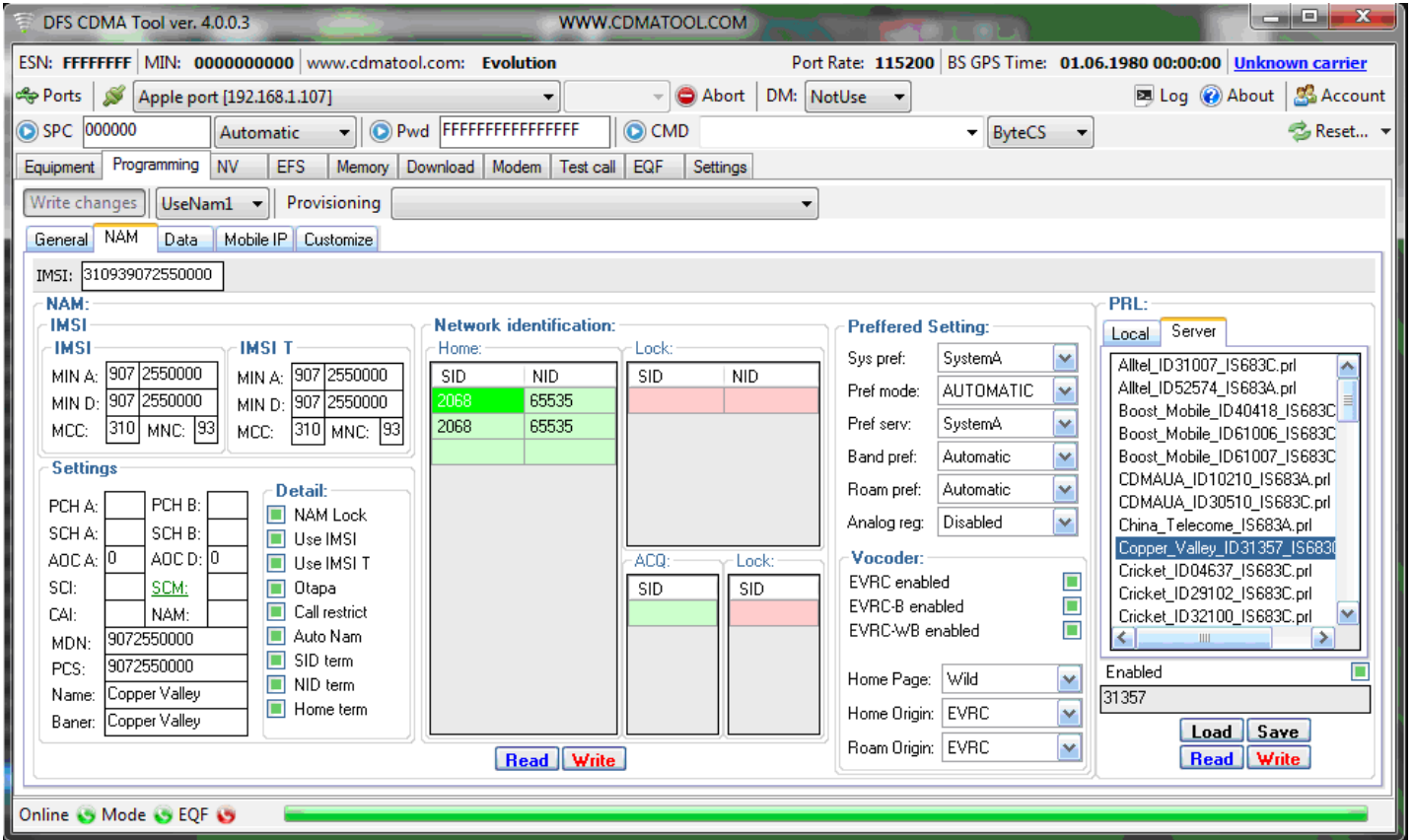


- Push the button **Activate**, confirm **Yes**

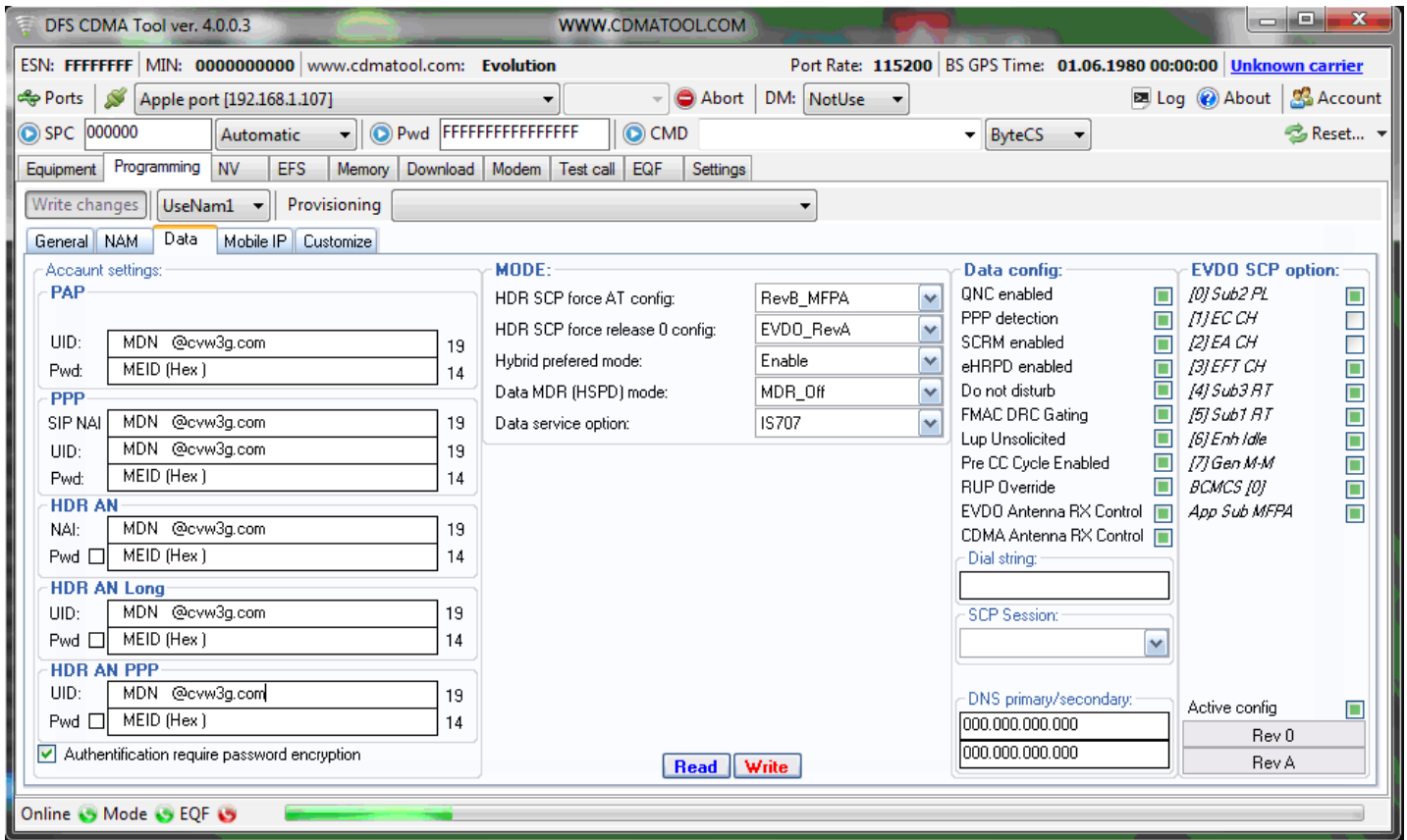


# You are now ready for programming the operator Copper Valley CDMA iPhone 4

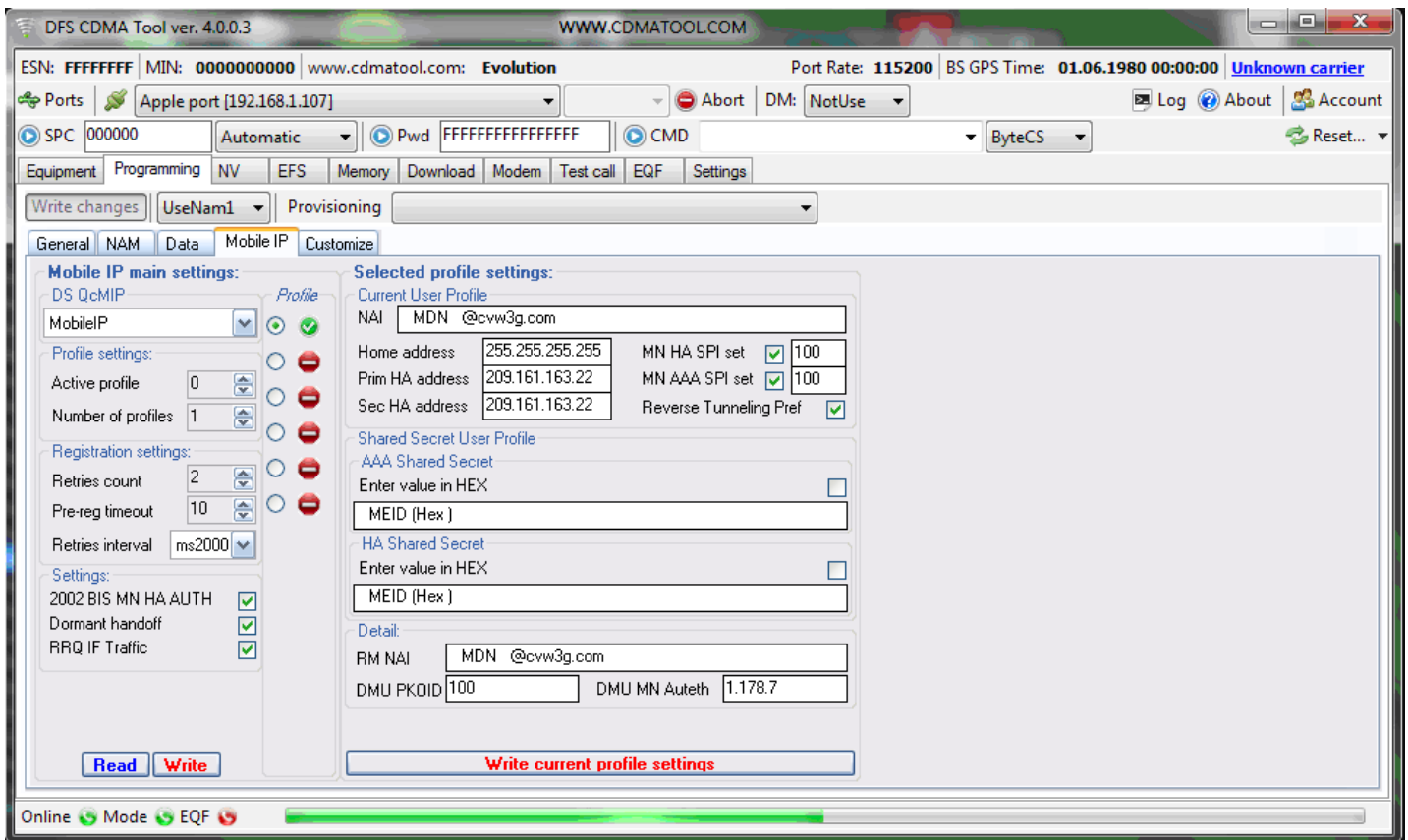
## Programming - NAM



### Programming – Data



### Programming – Mobile IP



## How do I know HDR Password on the Copper Valley

Serial Numbers:

**ESN:**

HEX:	80081FAC	NVI:		<b>Read</b>
DEC:	12800532396	DPS:		<b>Write</b>
CS:	222F2E17	EFS:		<b>Status</b>

**MEID:**

HEX:	A00000745FFDFF		<b>Read</b>
DEC:	268435467606290943		<b>Write</b>
pESN:	80081FAC	CD	<b>Status</b>
NVI:			
EFS:			

**pESN->MEID**

When you connect your phone, on the tab "**General**", click **Read MEID**, MEID HEX value will be password **MEID (Hex)**.

## 3G is not working:

\* Check in the phone:



\* Check that the settings stored in the phone:

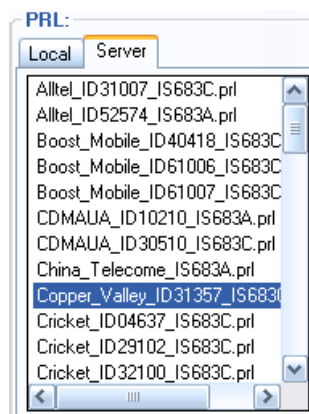
Tab "**Data**" and "**Mobile IP**"

After the MDN to be a prefix - **@cvw3g.com**

Password - **MEID** (HEX)

In the setting of "**Mobile IP**" mode must be enabled - **Mobile IP** and one active profile (**green**)

\* Check PRL (for different states - may be different PRL files):



In some cases, PRL after flash need to re-write the data in the DATA and MIP