

Powered by Telecom Logic group

DFS CDMA
Professional CDMA Software

Iusacell Wireless



Connect Apple iPhone 4 or iPad 2 CDMA to DFS

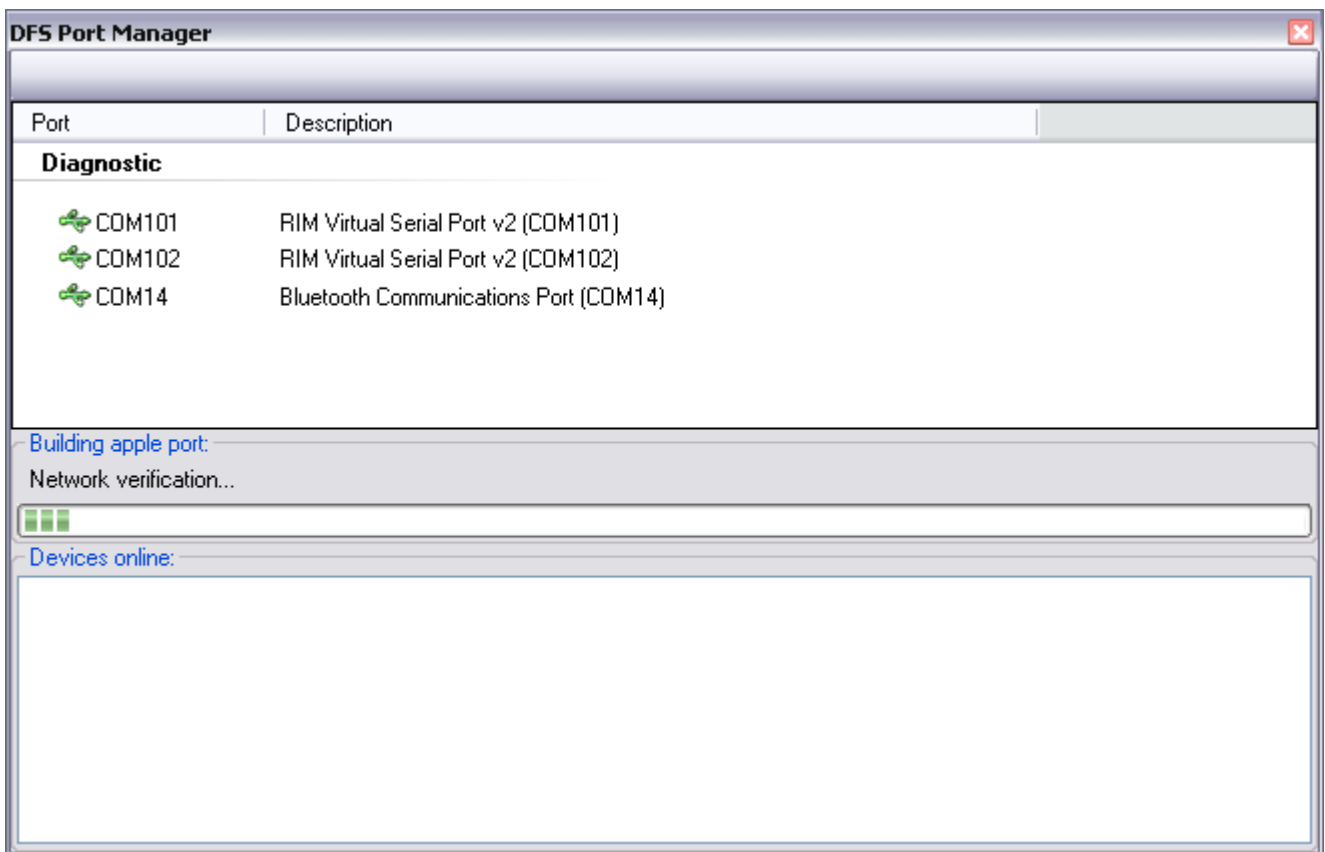
1. Jailbreak **iPhone 4 CDMA**
2. Install **openSSH**
3. Connect **iPhone 4 CDMA** to **Wi-Fi**:



4. Connect **iPhone 4 CDMA** to **USB-cable**:



5. Run **CDMA Tool**. Open **Ports Manager** from DFS:



- Network verification...



Network adapters

 192.168.1.103 Apple port [192.168.1.103]

- After building apple port the **iPhone 4 CDMA**, you need to add the Port (double-click)

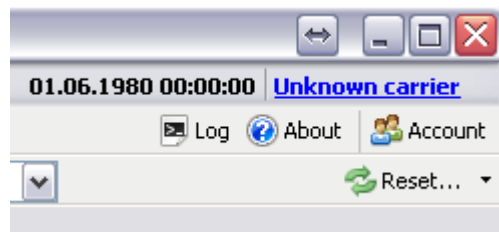
Network adapters

  192.168.1.103 Apple port [192.168.1.103]

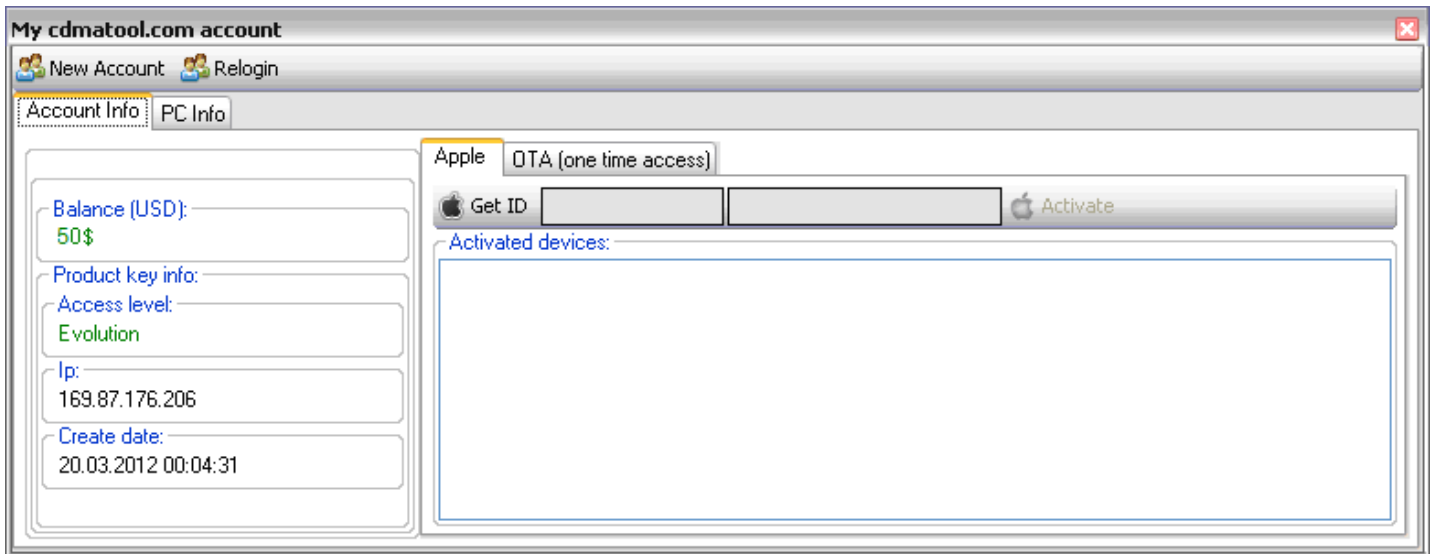
- In the log of the program will wait until the iPhone ID:

```
Apple port [192.168.1.103] Security delegate initialization... id:0000000000000000
Apple port [192.168.1.103] Security delegate initialization... id:0000000000000000
Apple port [192.168.1.103] ID A100001C8133F3
```

6. Go to the **Account** management:



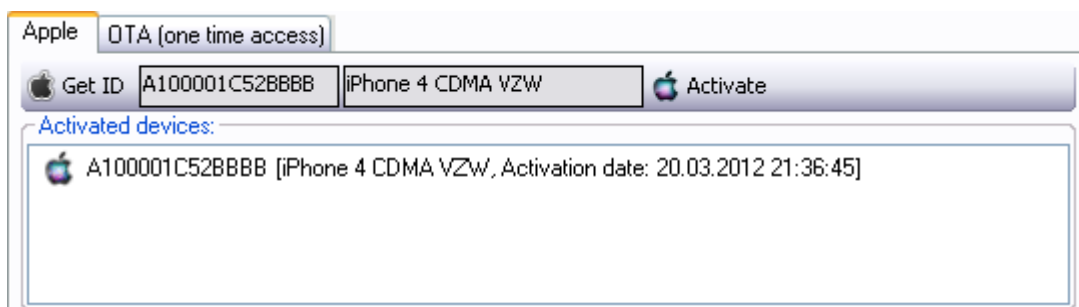
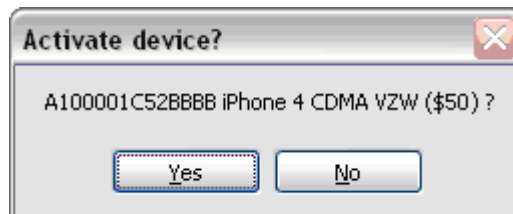
On the balance (\$50) shall be the amount necessary for the operation:



- Push the button **Get ID**

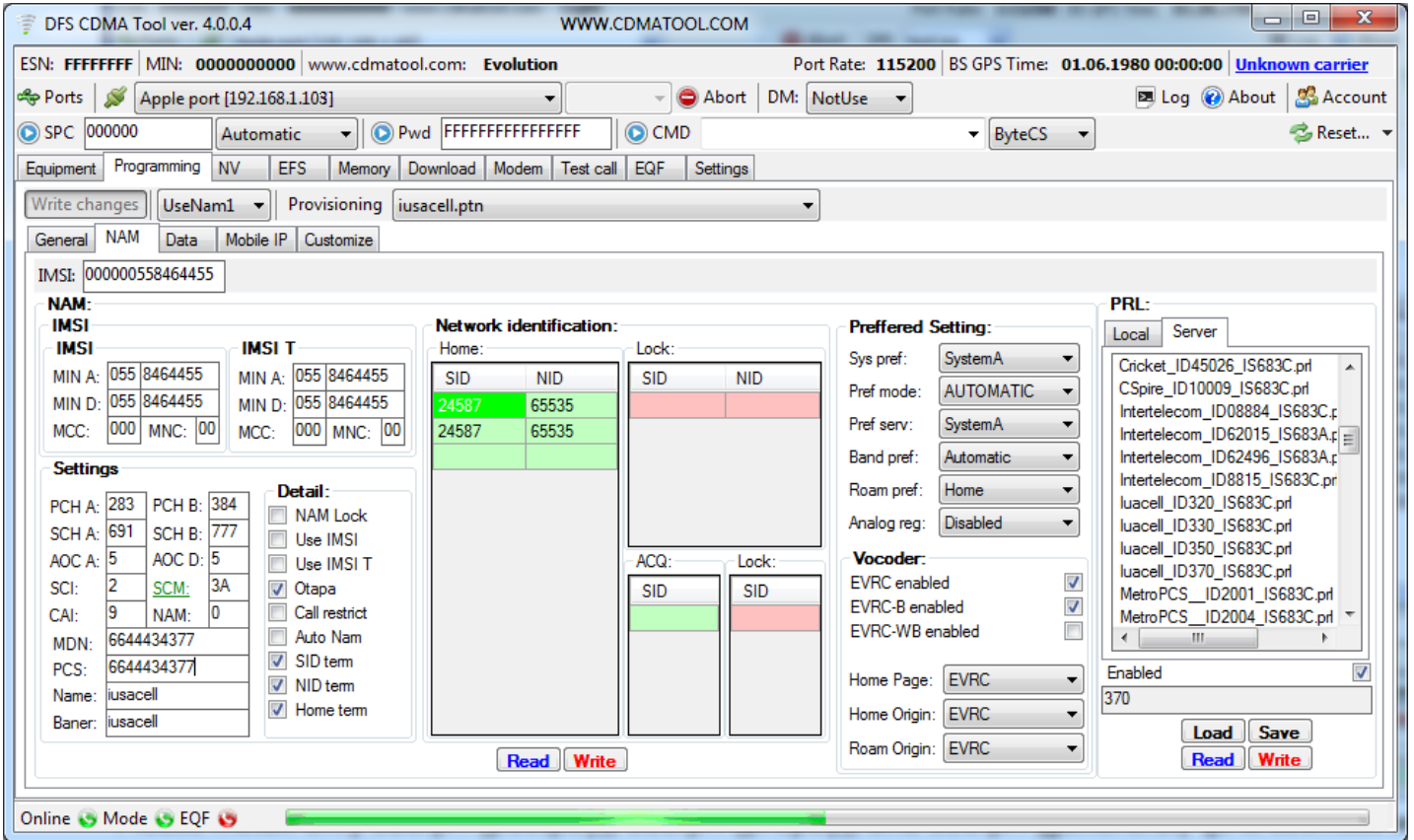


- Push the button **Activate**, confirm **Yes**



You are now ready for programming the operator Iusacell CDMA iPhone 4

Programming - NAM

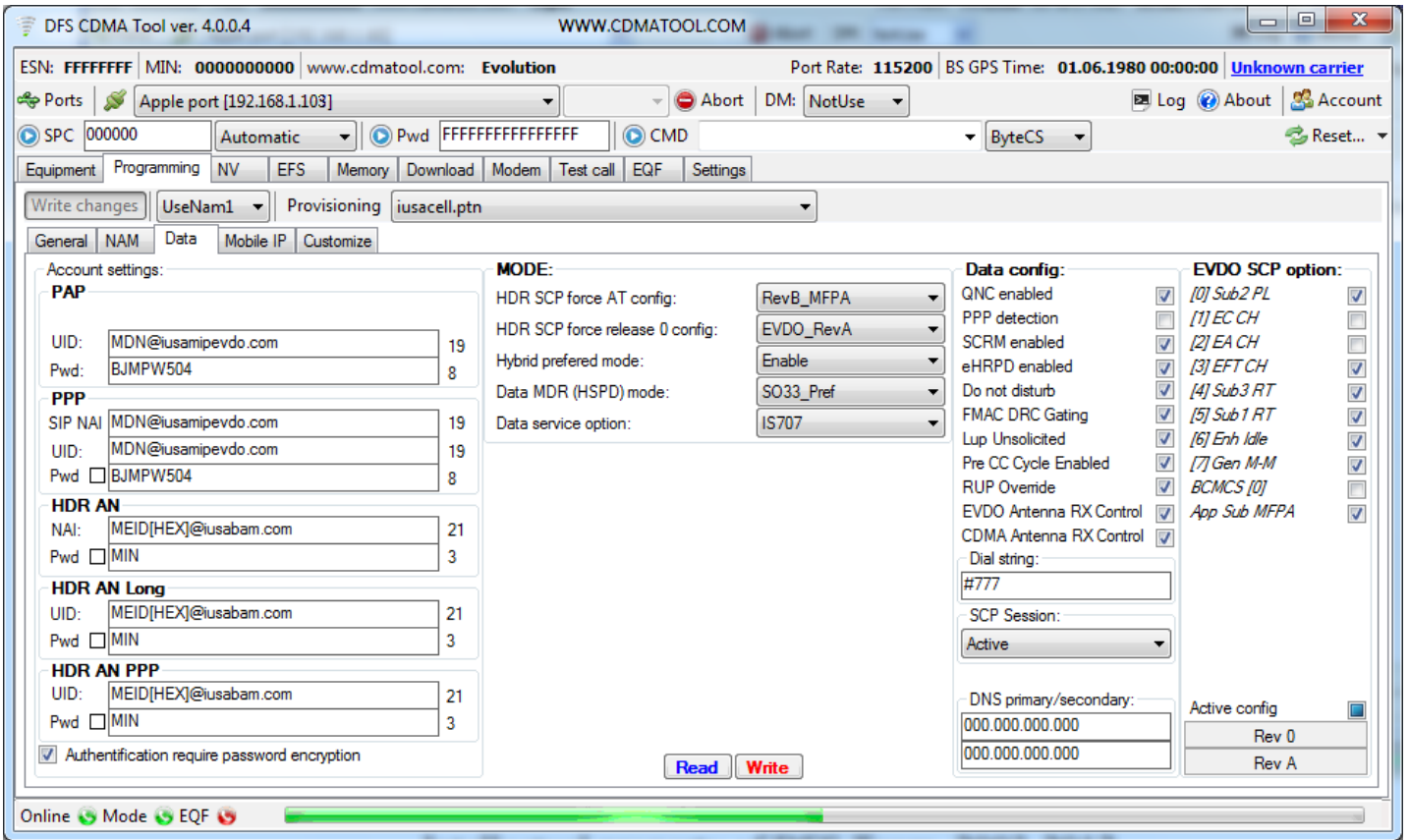


Choose PRL that matches your carrier plan:

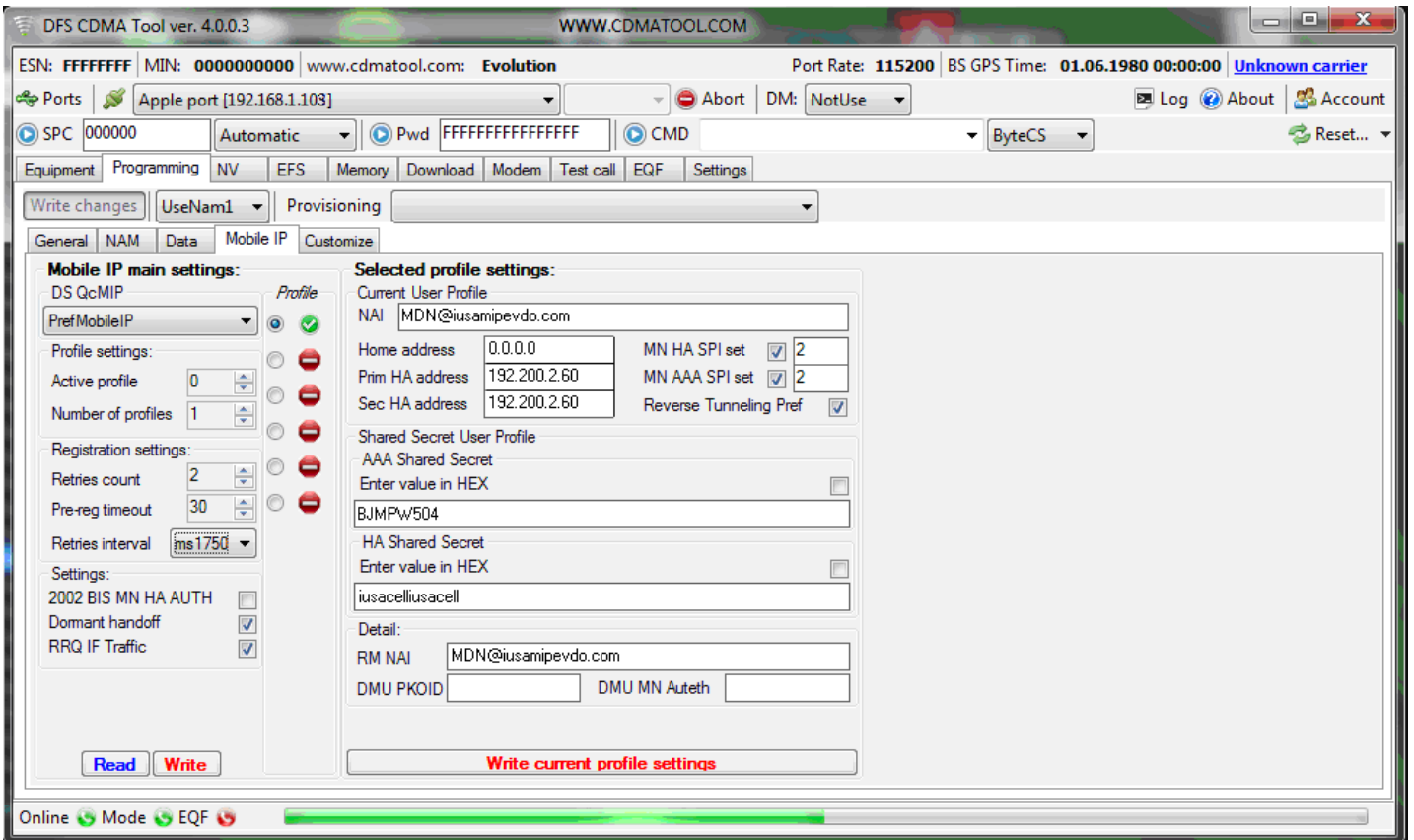
- Iuacell_ID320_IS683C.prl* - Postpay
- Iuacell_ID330_IS683C.prl* - Prepay
- Iuacell_ID350_IS683C.prl* - General

In some cases, PRL after flash need to re-write the data in the DATA and MIP.

Programming – Data



Programming – Mobile IP



3G is not working:

* Check in the phone:



* Check that the settings stored in the phone:

Tab "**Data**"

After the MDN to be a prefix **UID PPP** and **UID PAP** from **Data** - **@iusamipevdo.com**
Password - **BJMPW504**

After the MDN to be a prefix **HDR** - **@iusabam.com**
Password - **MIN**

Tab "**Mobile IP**"

After the MDN to be a prefix **NAI** from **MIP** - **@iusamipevdo.com**
AAA Shared Secret - **BJMPW504**
HA Shared Secret - **iusacelliusacell**

In the setting of "**Mobile IP**" mode must be enabled - **PrefMobileIP**

How do I know MIP Password on the iusacell Wireless

MEID:	
HEX:	A000002567850A
DEC:	268435459706784266
pESN:	8068D8BE CD
NVI:	
EFS:	
	<input type="button" value="Read"/>
	<input type="button" value="Write"/>
	<input type="button" value="Status"/>
	<input type="button" value="pESN->MEID"/>

When you connect your phone, on the tab "**General**", click **Read MEID**, MEID HEX value will be password **MEID (Hex)**.