

Powered by Telecom Logic group

DFS CDMA
Professional CDMA Software

MetroPCS

metroPCS.
Unlimit Yourself.



Connect iPhone 4 CDMA to DFS

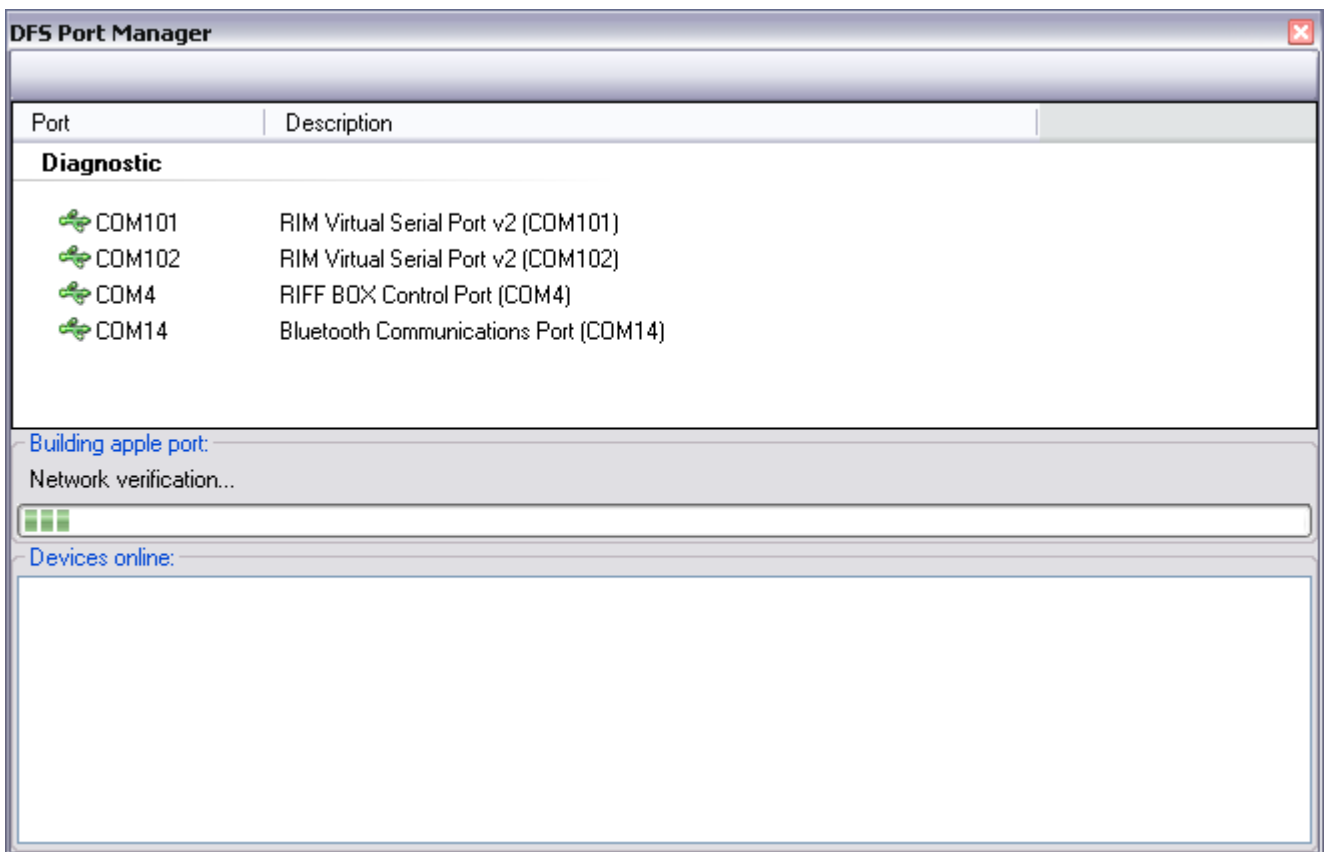
1. Jailbreak **iPhone 4 CDMA**
2. Install **openSSH**
3. Connect **iPhone 4 CDMA** to **Wi-Fi**:



4. Connect **iPhone 4 CDMA** to **USB-cable**:



5. Run **CDMA Tool**. Open **Ports Manager** from DFS:



- Network verification...



Network adapters

192.168.1.103 Apple port [192.168.1.103]

- After building apple port the **iPhone 4 CDMA**, you need to add the Port (double-click)

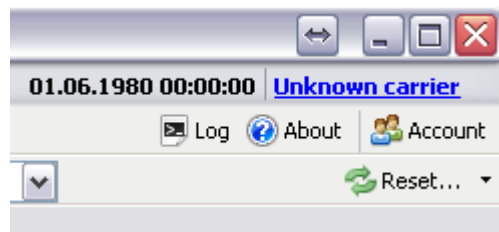
Network adapters

192.168.1.103 Apple port [192.168.1.103]

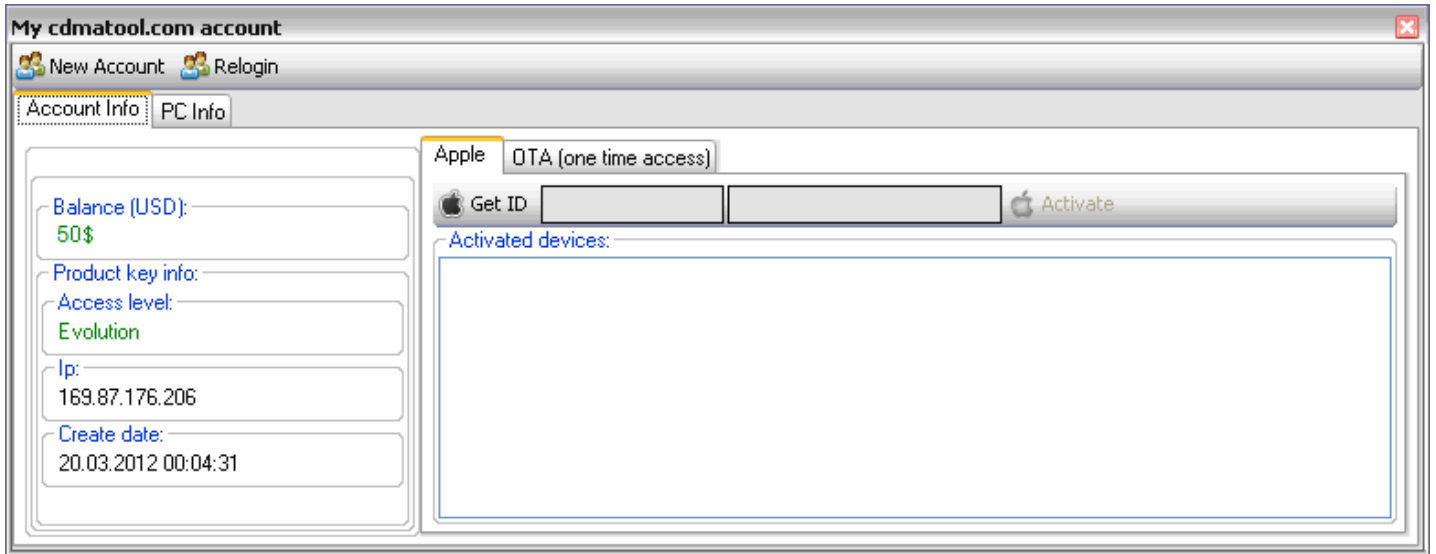
- In the log of the program will wait until the iPhone ID:

```
Apple port [192.168.1.103] Security delegate initialization... id:0000000000000000
Apple port [192.168.1.103] Security delegate initialization... id:0000000000000000
Apple port [192.168.1.103] ID A100001C8133F3
```

6. Go to the **Account** management:



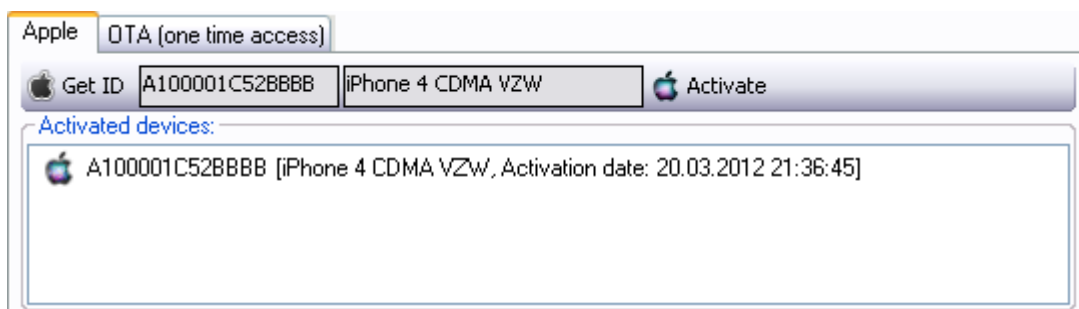
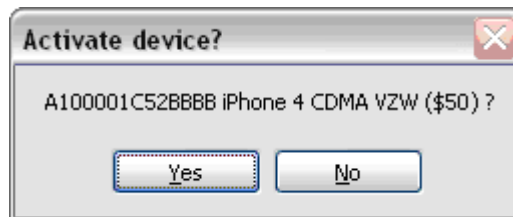
On the balance (\$50) shall be the amount necessary for the operation:



- Push the button **Get ID**

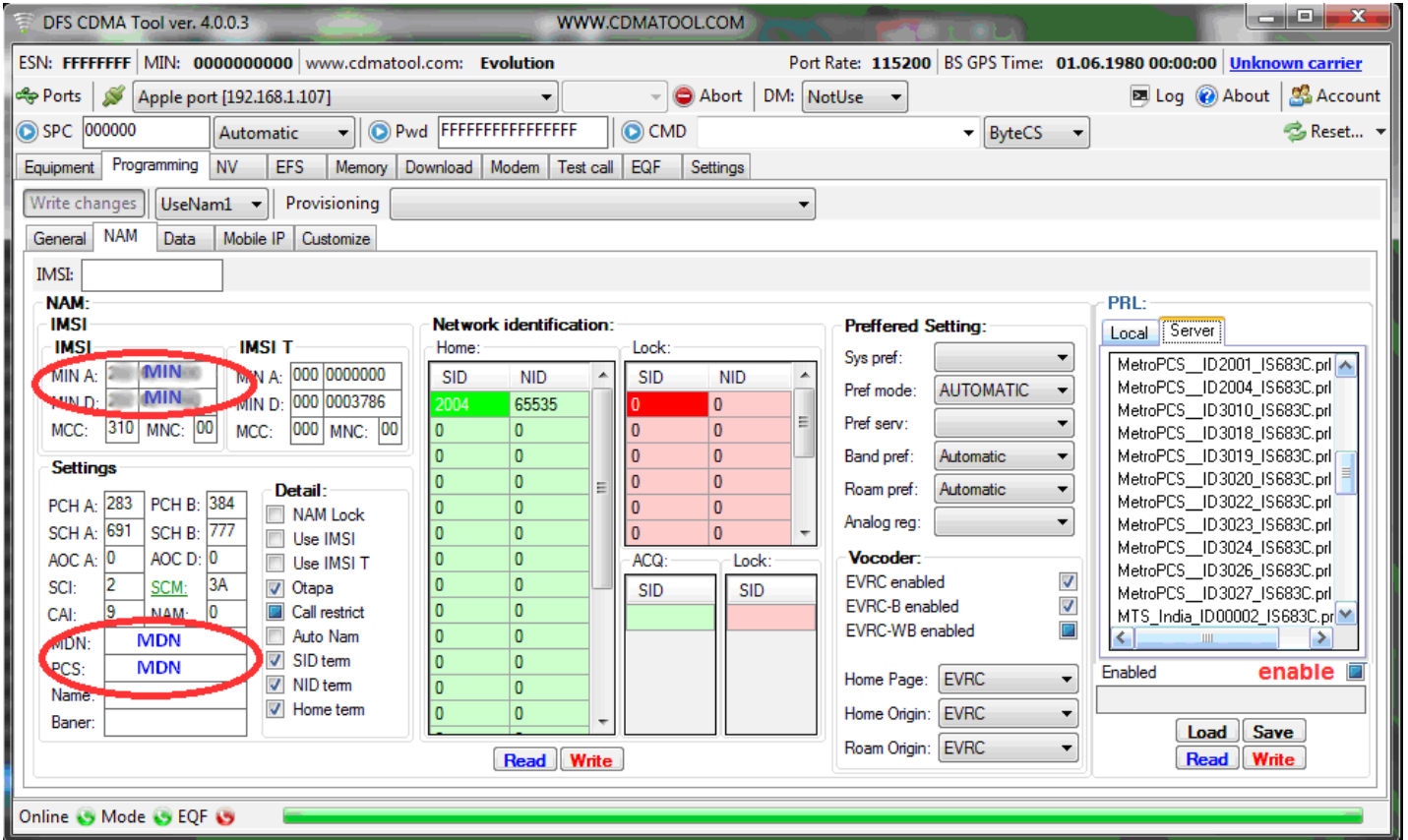


- Push the button **Activate**, confirm **Yes**

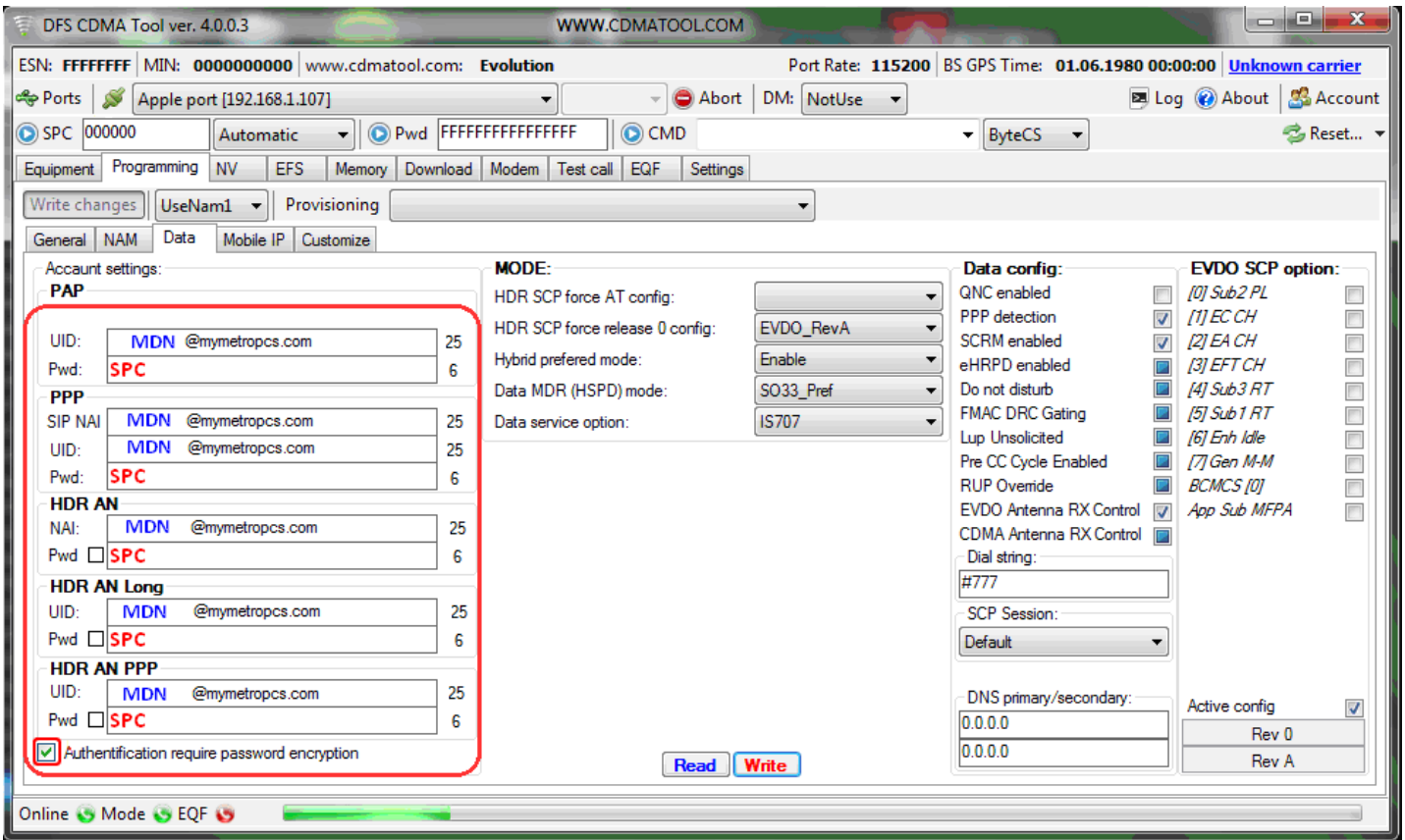


You are now ready for programming the operator MetroPCS CDMA iPhone 4

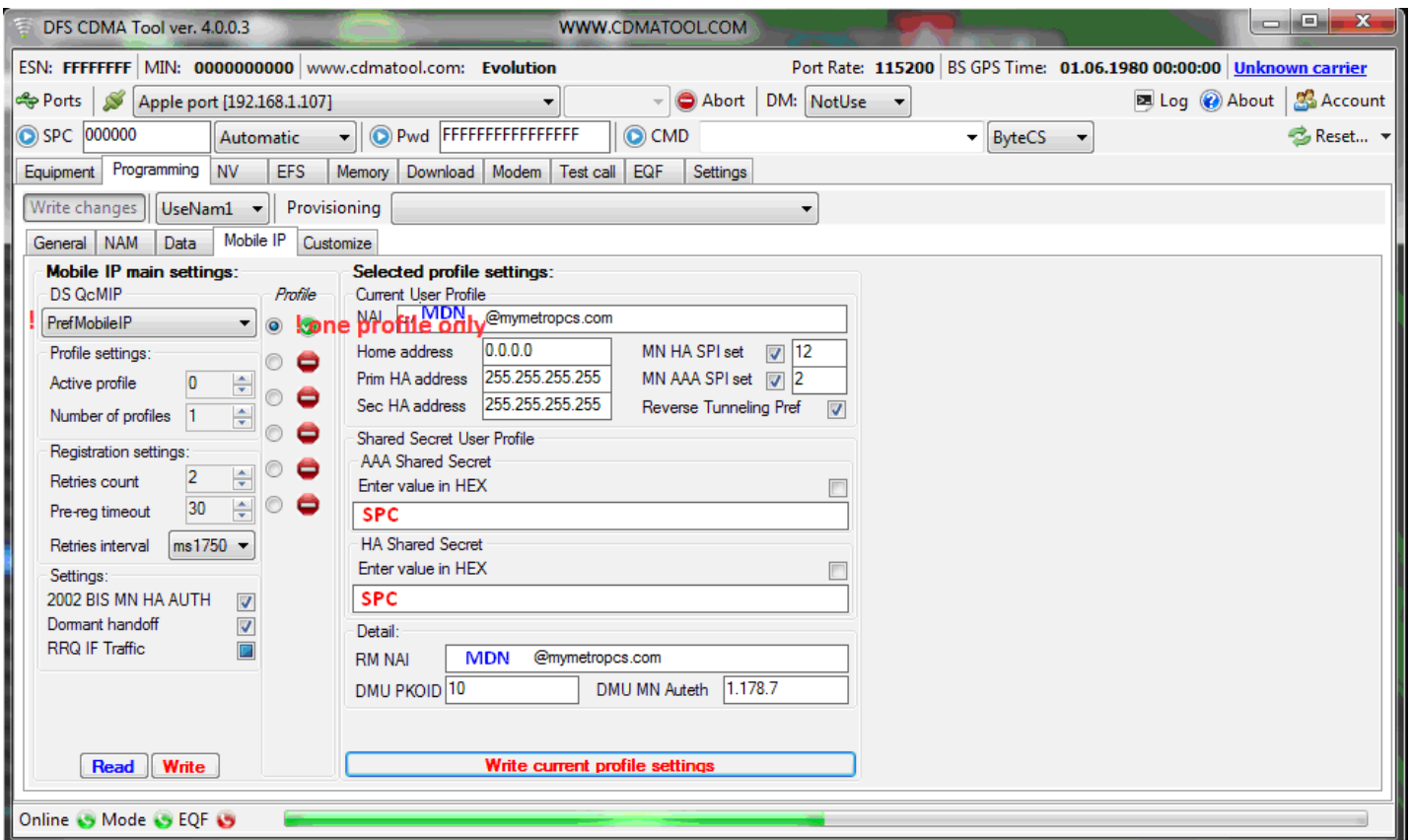
Programming - NAM



Programming – Data



Programming – Mobile IP



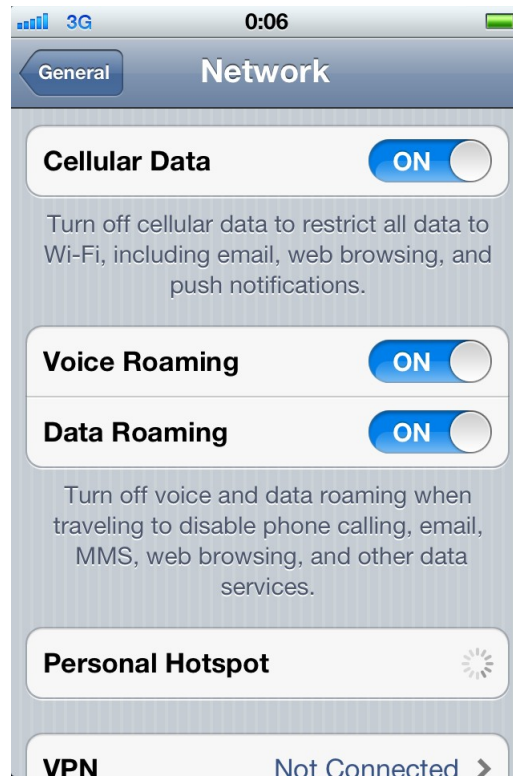
How to get SPC on MetroPCS:

Serial Numbers:		Settings:	
ESN:		CAVE:	
HEX: 80A09E42	NVI: <input type="text"/>	DEC: <input type="text"/>	<input type="text"/>
DEC: 12810526274	DPS: <input type="text"/>	AKEY: <input type="text"/>	<input type="text"/>
CS: FFFFFFFF	EFS: <input type="text"/>	SSDA: <input type="text"/>	<input type="text"/>
		SSDB: <input type="text"/>	
			<input type="button" value="Read"/>
			<input type="button" value="Reset"/>
			<input type="button" value="Write"/>
MEID:		CONFIG:	
HEX: <input type="text"/>		Ruim Config: <input type="text"/>	<input type="button" value="Read"/>
DEC: <input type="text"/>		Voice Priv.: <input type="text"/>	<input type="button" value="Write"/>
pESN: <input type="text"/>	CD <input type="text"/>	USB Config: <input type="text"/>	
NVI: <input type="text"/>			
EFS: <input type="text"/>			
	<input type="button" value="pESN->MEID"/>		
IMEI:		SPC Calculator:	
IMEI: <input type="text"/>		Metro PSC: <input type="text" value="902750"/>	
TAC: <input type="text"/>	SNR: <input type="text"/>		
FAC: <input type="text"/>	SP: <input type="text"/>		
NVI: <input type="text"/>			

When you connect your phone, on the tab "General", click Read, then at the bottom of the program "SPC Calculator" you will see the correct SPC for MetroPCS.

3G is not working:

* Check in the phone:



* Check that the settings stored in the phone:

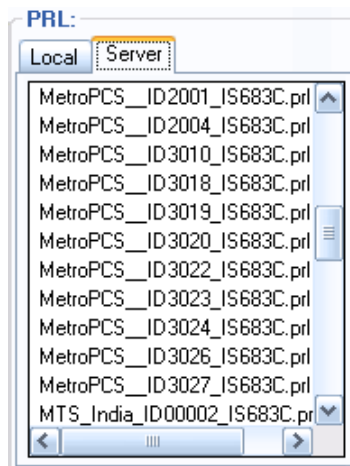
Tab "**Data**" and "**Mobile IP**"

After the MDN to be a prefix - **@mymetropcs.com**

Password - **SPC**

In the setting of "**Mobile IP**" mode must be enabled - **PrefMobileIP** and one active profile (**green**)

* Check PRL (for different states - may be different PRL files):



In some cases, PRL after flash need to re-write the data in the DATA and MIP

DFS Professional CDMA Tool User Manual Apple

3G is not working iPhone 4 Sprint:

<http://cdmatool.com/Download>

[How to fix Sprint iPhone 3G error.pdf](#)