

iDFS CDMA

Professional CDMA Software for Apple devices

iDFS Tool flash Revol Wireless



Flash the iPhone 4\iPad 2 carrier Revol Wireless is easy!

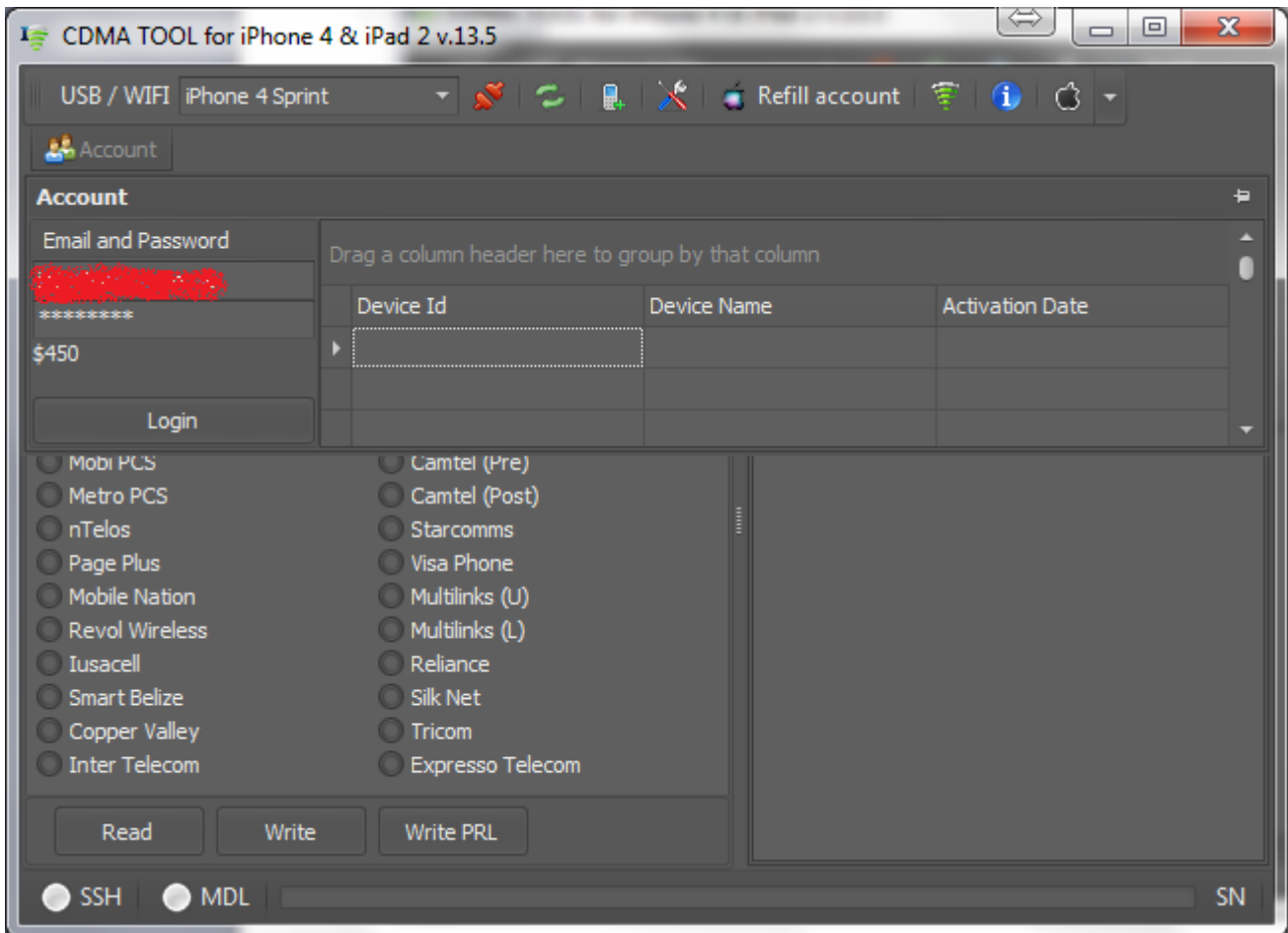


What do you need to have before flashing:

1. iPhone 4 CDMA or iPad 2 CDMA
2. Original Apple USB cable
3. **iTunes** installed
4. Device has to be **JailBroken**
5. **OpenSSH** and **Cydia** installed

Step 1

Enter your account details (e-mail and password) into iDFS and press «**Login**». Wait until your account data will be synchronized.

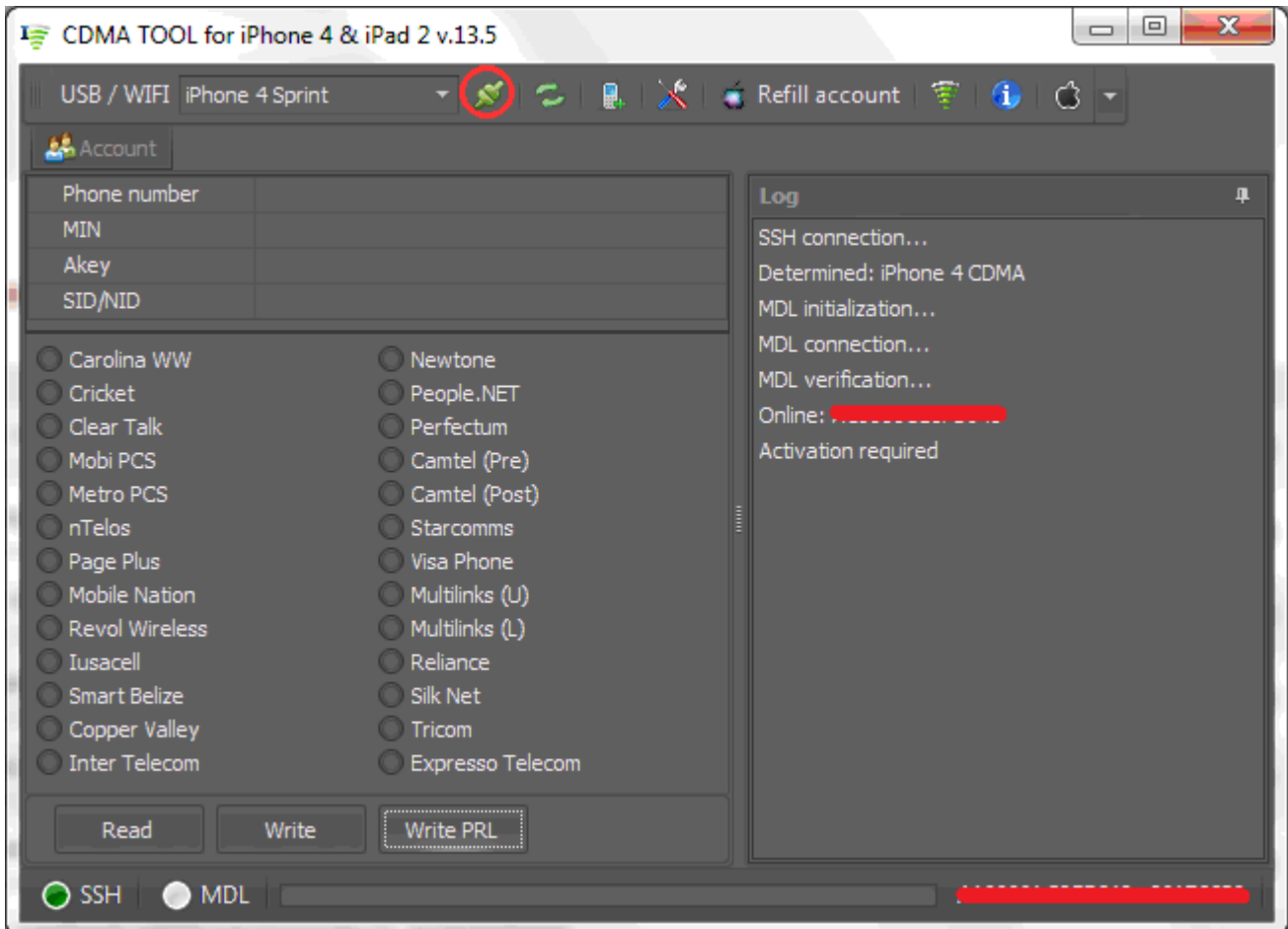


Step 2

Connect your device via USB. Device automatically will be recognized by iDFS.



To connect, click on the icon "Connect\Disconnect"

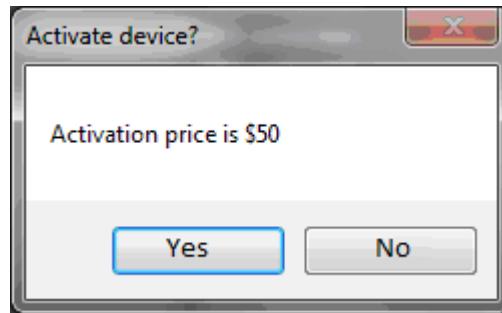


Activate your Apple MEID by pressing «**Activate**» button.

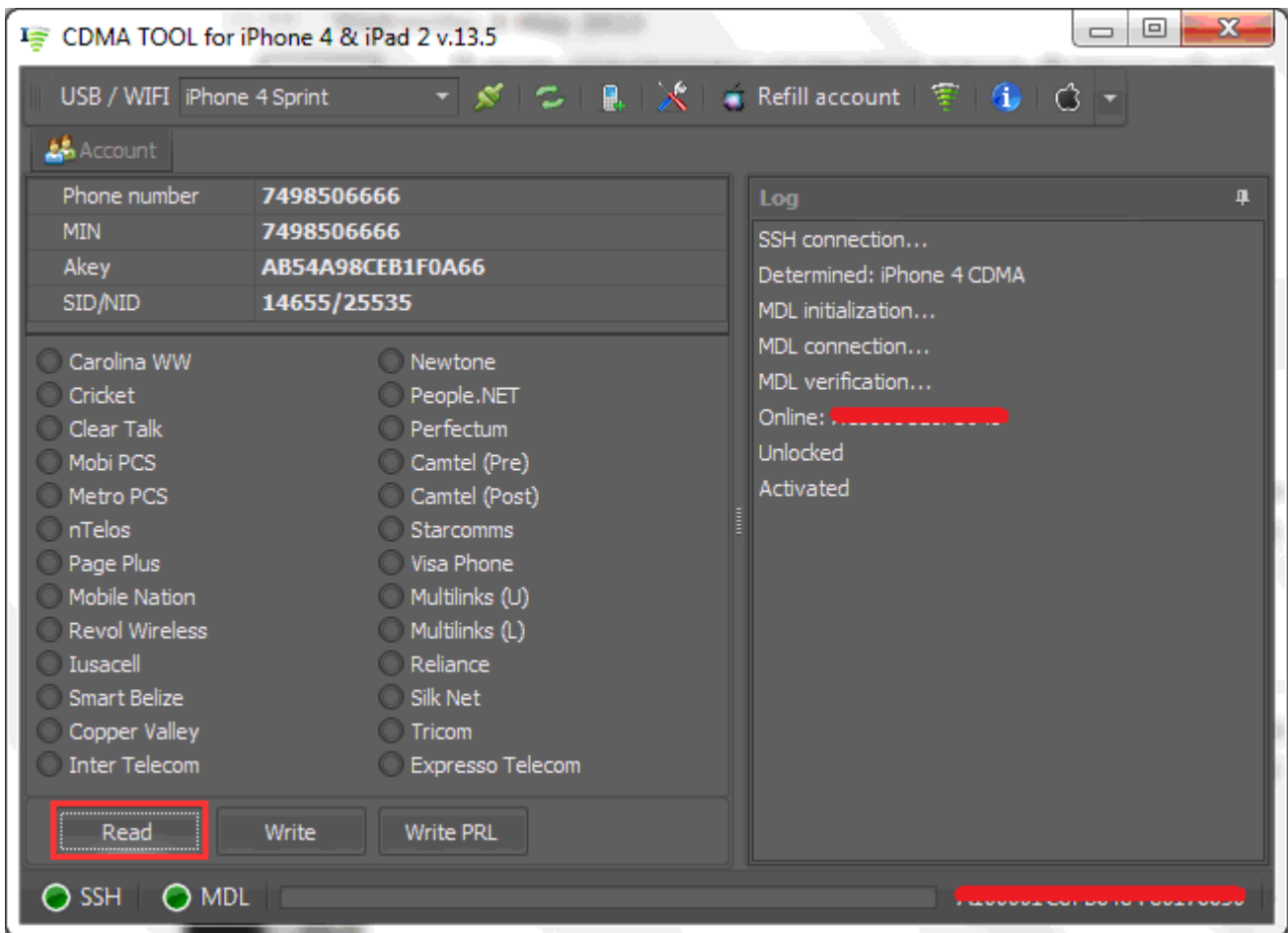


iDFS CDMA flashing Revol Wireless

Confirm:



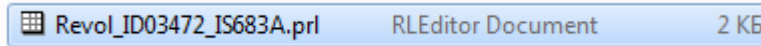
After activation iDFS will read and write all data from your device.



Step 3: Flashing Revol Wireless

Flash PRL to Revol Wireless

Click «Write PRL» and select your Revol Wireless PRL:



PRL write: Ok

PRL write complete

Flash MIN\MDN to Revol Wireless

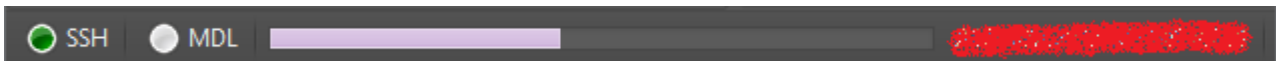
Enter the required information: Phone number (MDN), MIN, Akey, SID\NID. Select destination carrier and click «Write»

Phone number	7498506666	Phone number	2162534555	1
MIN	7498506666	MIN	2162534555	
Akey	AB54A98CEB1F0A66	Akey	701AFE2165BEF618	
SID/NID	14655/25535	SID/NID	5406/56789	

<input type="radio"/> Carolina WW	<input type="radio"/> Newtone	<input type="radio"/> People.NET
<input type="radio"/> Cricket	<input type="radio"/> People.NET	<input type="radio"/> Perfectum
<input type="radio"/> Clear Talk	<input type="radio"/> Perfectum	<input type="radio"/> Dalacom
<input type="radio"/> Mobi PCS	<input type="radio"/> Camtel (Pre)	<input type="radio"/> Camtel (Pre)
<input type="radio"/> Metro PCS	<input type="radio"/> Camtel (Post)	<input type="radio"/> Camtel (Post)
<input type="radio"/> nTelos	<input type="radio"/> Starcomms	<input type="radio"/> Starcomms
<input type="radio"/> Page Plus	<input type="radio"/> Visa Phone	<input type="radio"/> Visa Phone
<input type="radio"/> Mobile Nation	<input type="radio"/> Multilinks (U)	<input type="radio"/> Multilinks (U)
<input type="radio"/> Revol Wireless	<input type="radio"/> Multilinks (L)	<input type="radio"/> Multilinks (L)
<input type="radio"/> Iusacell	<input type="radio"/> Reliance	<input type="radio"/> Reliance
<input type="radio"/> Smart Belize	<input type="radio"/> Silk Net	<input type="radio"/> Silk Net
<input type="radio"/> Copper Valley	<input type="radio"/> Tricom	<input type="radio"/> Tricom
<input type="radio"/> Inter Telecom	<input type="radio"/> Expresso Telecom	<input type="radio"/> Expresso Telecom

Read Write Write PRL

Status bar displays read/write progress:



All flashing DONE!

Follow the news:



Video manuals:



Official site www.cdmatool.com:

