

Powered by Telecom Logic group

DFS CDMA Professional CDMA Software

nTelos Wireless



Connect iPhone 4 CDMA to DFS

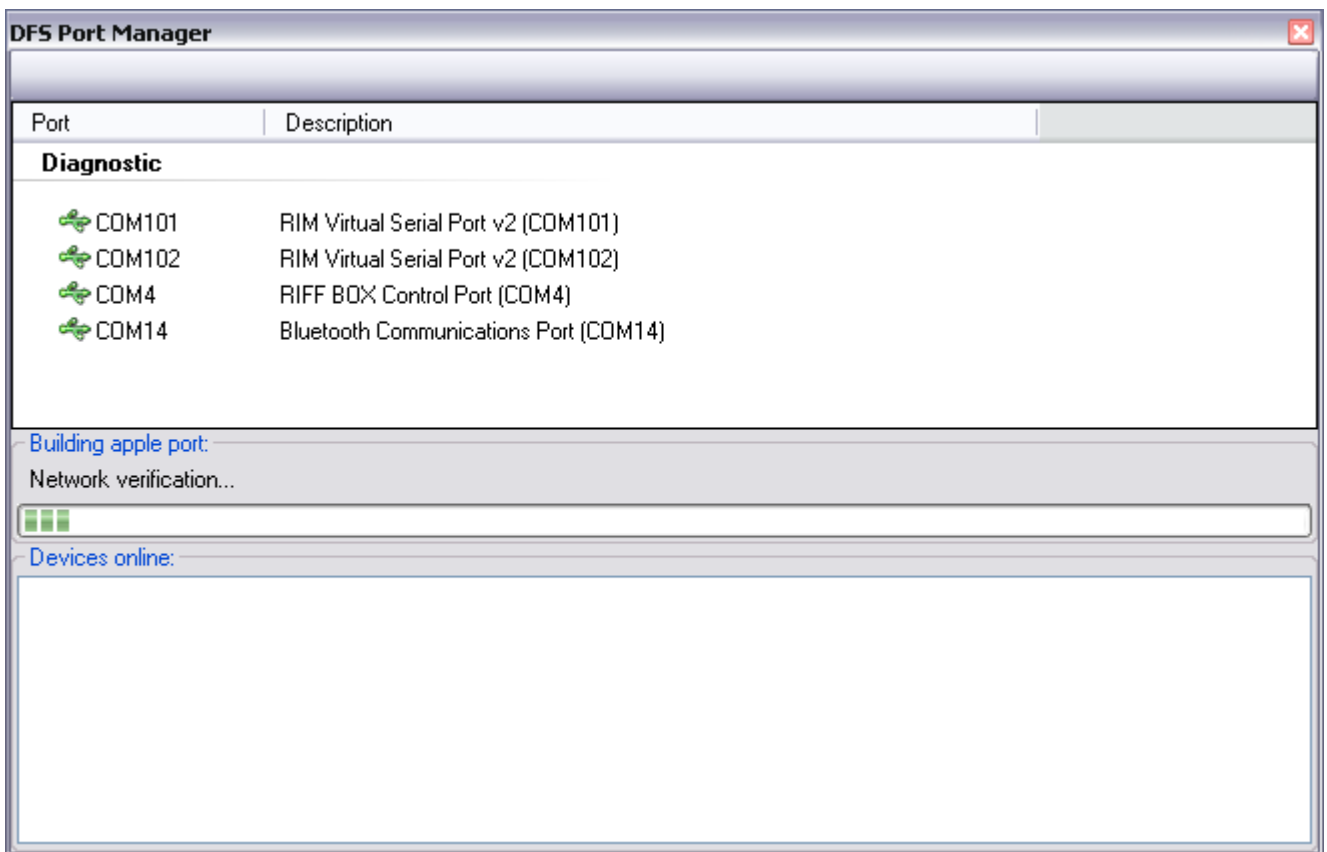
1. Jailbreak **iPhone 4 CDMA**
2. Install **openSSH**
3. Connect **iPhone 4 CDMA** to **Wi-Fi**:



4. Connect **iPhone 4 CDMA** to **USB-cable**:



5. Run **CDMA Tool**. Open **Ports Manager** from DFS:



- Network verification...





Network adapters

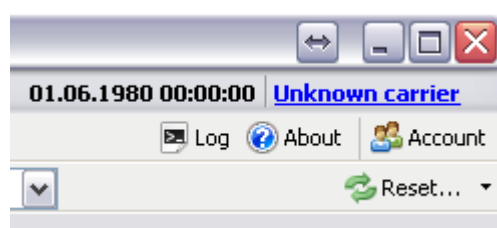
 192.168.1.103 Apple port [192.168.1.103]

- After building apple port the **iPhone 4 CDMA**, you need to add the Port (double-click)

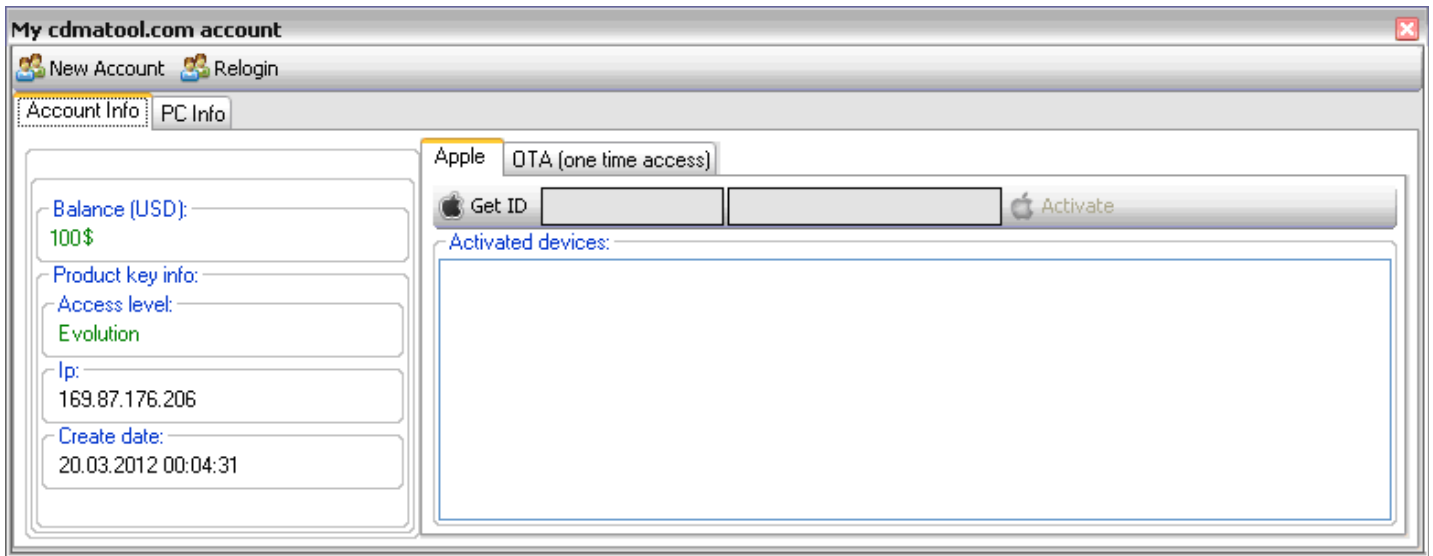
Network adapters

  192.168.1.103 Apple port [192.168.1.103]

6. Go to the **Account** management:



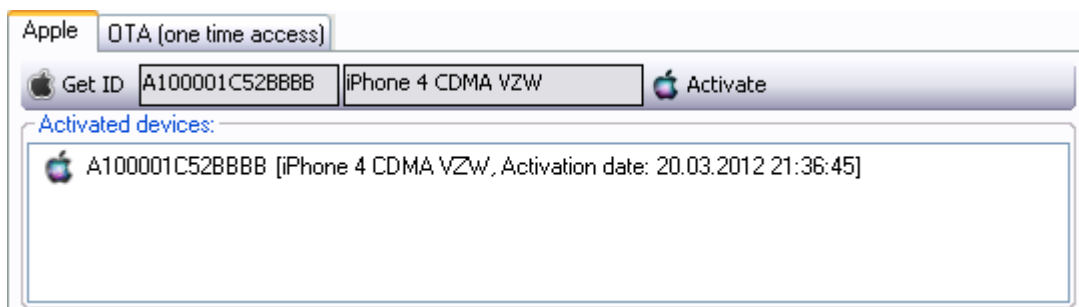
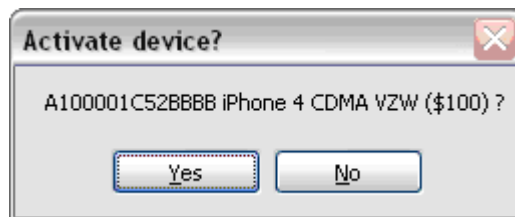
On the balance (\$100) shall be the amount necessary for the operation:



- Push the button **Get ID**



- Push the button **Activate**, confirm **Yes**



You are now ready for programming the operator nTelos Wireless CDMA iPhone 4

Programming - NAM

DFS CDMA Tool ver. 4.0.0.3 WWW.CDMATOOL.COM

ESN: 80C5B18B MIN: 0629987826 www.cdmatool.com: Evolution Port Rate: 115200 BS GPS Time: 11.06.2012 14:33:50

Ports: PANTECH UML290 Diagnostic Port (COM144) Abort DM: NotUse Log About Account

SPC: 000000 Automatic Pwd: FFFFFFFFFFFFFFFF CMD ByteCS Reset...

Equipment Programming NV EFS Memory Download Modem Test call EQF Settings

Write changes UseNam1 Provisioning

General NAM Data Mobile IP Customize

IMSI: 310000000007689

NAM:

IMSI

MIN A:	000 0007689	MIN A:	000 0007689
MIN D:	000 0007689	MIN D:	000 0007689
MCC:	310 MNC: 00	MCC:	310 MNC: 00

Settings

PCH A:	283	PCH B:	631
SCH A:	384	SCH B:	777
AOC A:	9	AOC D:	9
SCI:		SCM:	
CAI:		NAM:	
MDN:	0000007689		
PCS:	0000007689		
Name:	Carolina West Wirel		
Baner:	Carolina West Wirel		

Detail:

- NAM Lock
- Use IMSI
- Use IMSI T
- Otap
- Call restrict
- Auto Nam
- SID term
- NID term
- Home term

Network identification:

Home:		Lock:	
SID	NID	SID	NID
1522	65535		
1522	65535		

ACQ:

SID	Lock:

Preferred Setting:

Sys pref: SystemA
 Pref mode: AUTOMATIC
 Pref serv: SystemA
 Band pref: Automatic
 Roam pref: Automatic
 Analog reg: Disabled

Vocoder:

EVRC enabled
 EVRC-B enabled
 EVRC-WB enabled

Home Page: EVRC
 Home Origin: EVRC
 Roam Origin: EVRC

PRL:

Local Server

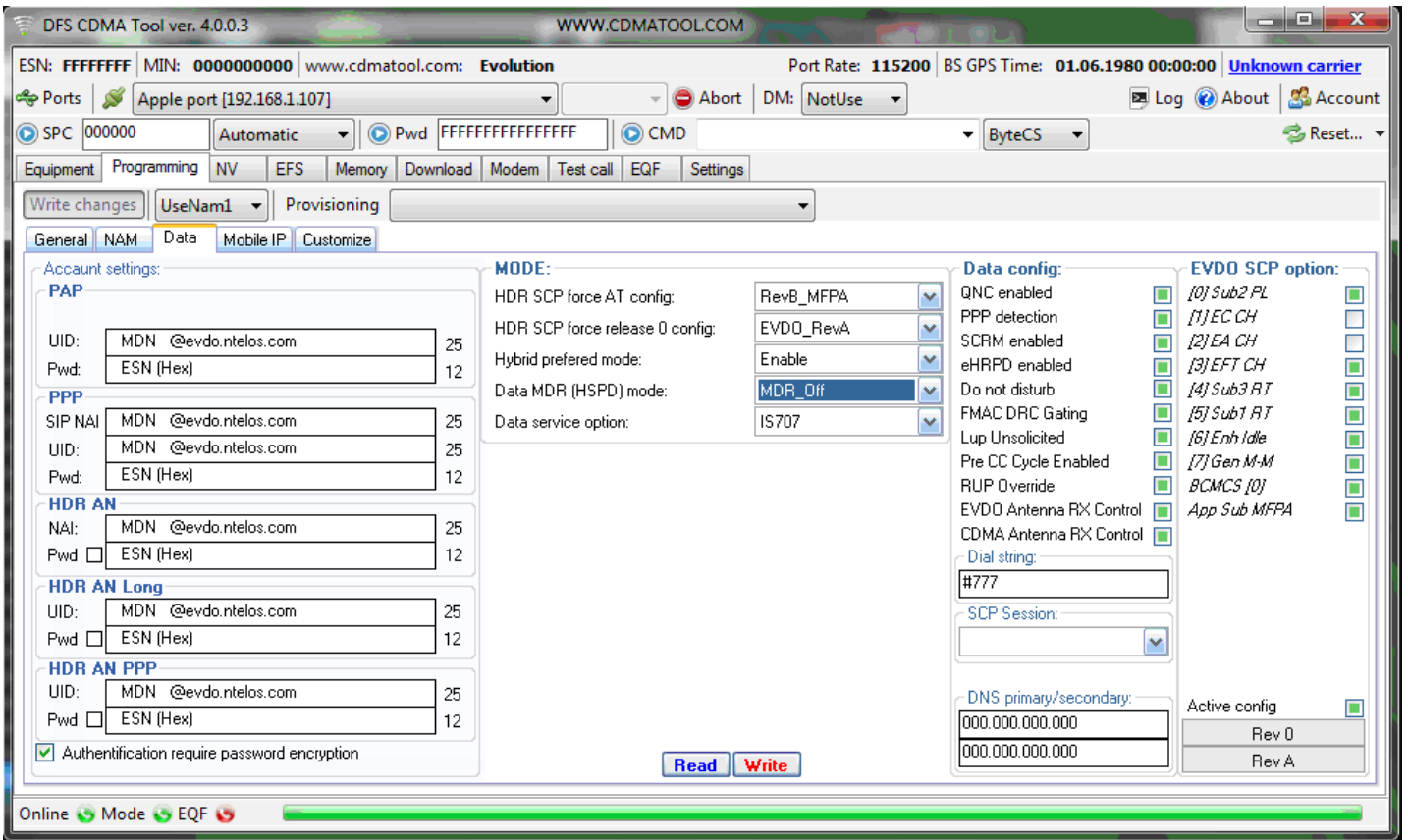
- Alltel_ID31007_IS683C.prl
- Alltel_ID52574_IS683A.prl
- Boost_Mobile_ID40418_IS683C
- Boost_Mobile_ID61006_IS683C
- Boost_Mobile_ID61007_IS683C
- CarolinaWestWireless_ID10102
- CDMAUA_ID10210_IS683A.prl
- CDMAUA_ID30510_IS683C.prl
- China_Telecome_IS683A.prl
- Copper_Valley_ID31357_IS683C
- Cricket_ID04637_IS683C.prl
- Cricket_ID29102_IS683C.prl

Enabled
 10102

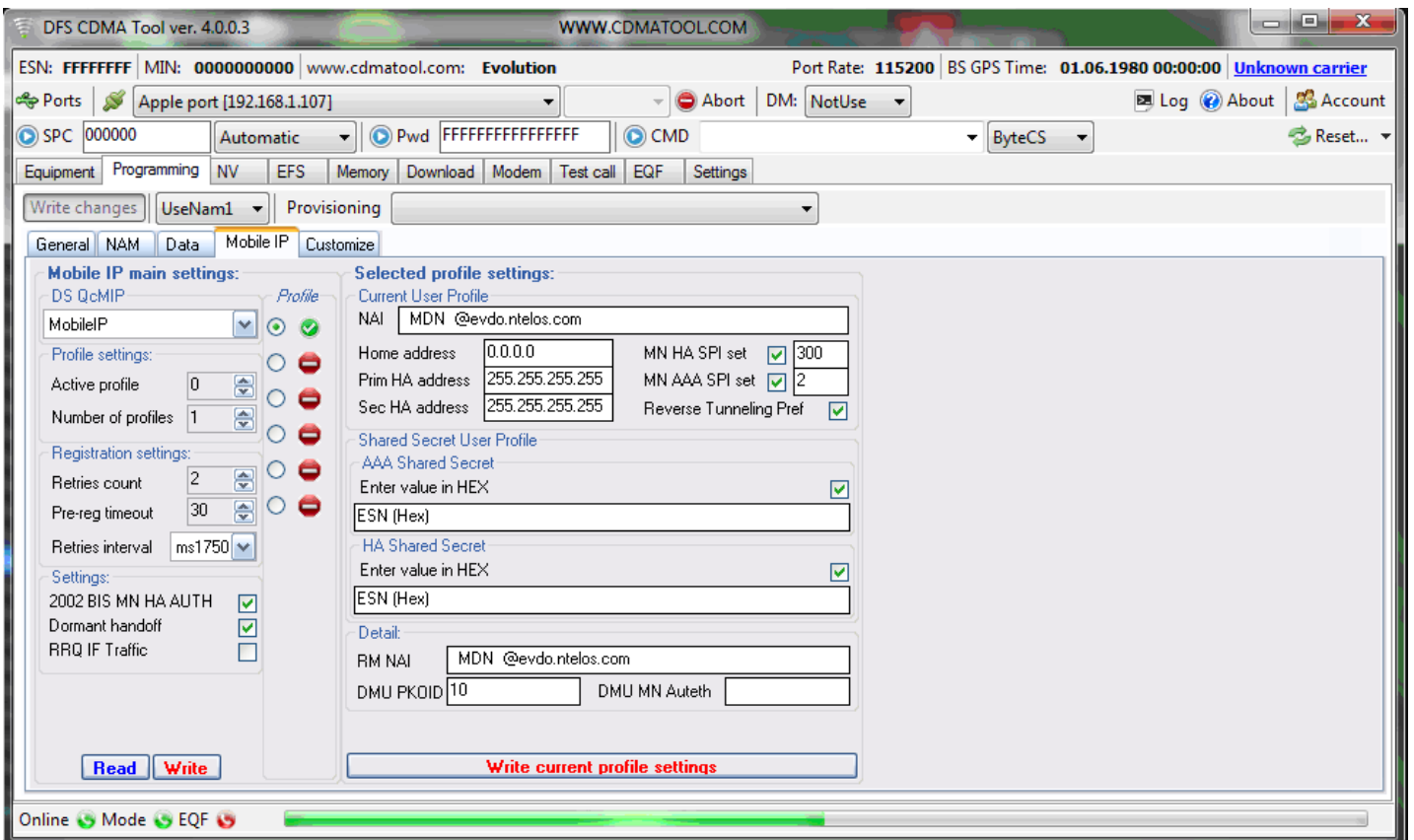
Load Save
 Read Write

Online Mode EQF

Programming – Data



Programming – Mobile IP



How do I know HDR Password on the nTelos Wireless

Serial Numbers:

ESN:

HEX:	180081FAC	NVI:		<input type="button" value="Read"/>
DEC:	12800532396	DPS:		<input type="button" value="Write"/>
CS:	222F2E17	EFS:		<input type="button" value="Status"/>

MEID:

HEX:				<input type="button" value="Read"/>
DEC:				<input type="button" value="Write"/>
pESN:		CD		<input type="button" value="Status"/>
NVI:				
EFS:				<input type="button" value="pESN->MEID"/>

When you connect your phone, on the tab "**General**", click **Read ESN**, ESN HEX value will be password ESN (Hex).

3G is not working:

* Check in the phone:



* Check that the settings stored in the phone:

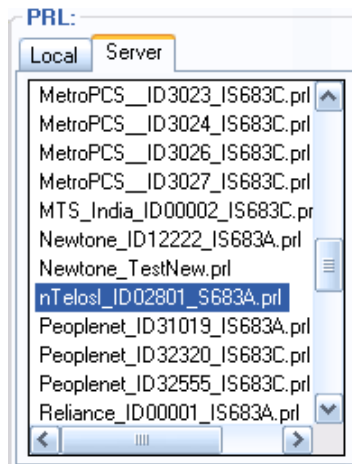
Tab "**Data**" and "**Mobile IP**"

After the MDN to be a prefix - **@evdo.ntelos.com**

Password - **ESN (HEX)**

In the setting of "**Mobile IP**" mode must be enabled - **Mobile IP** and one active profile (**green**)

* Check PRL (for different states - may be different PRL files):



In some cases, PRL after flash need to re-write the data in the DATA and MIP