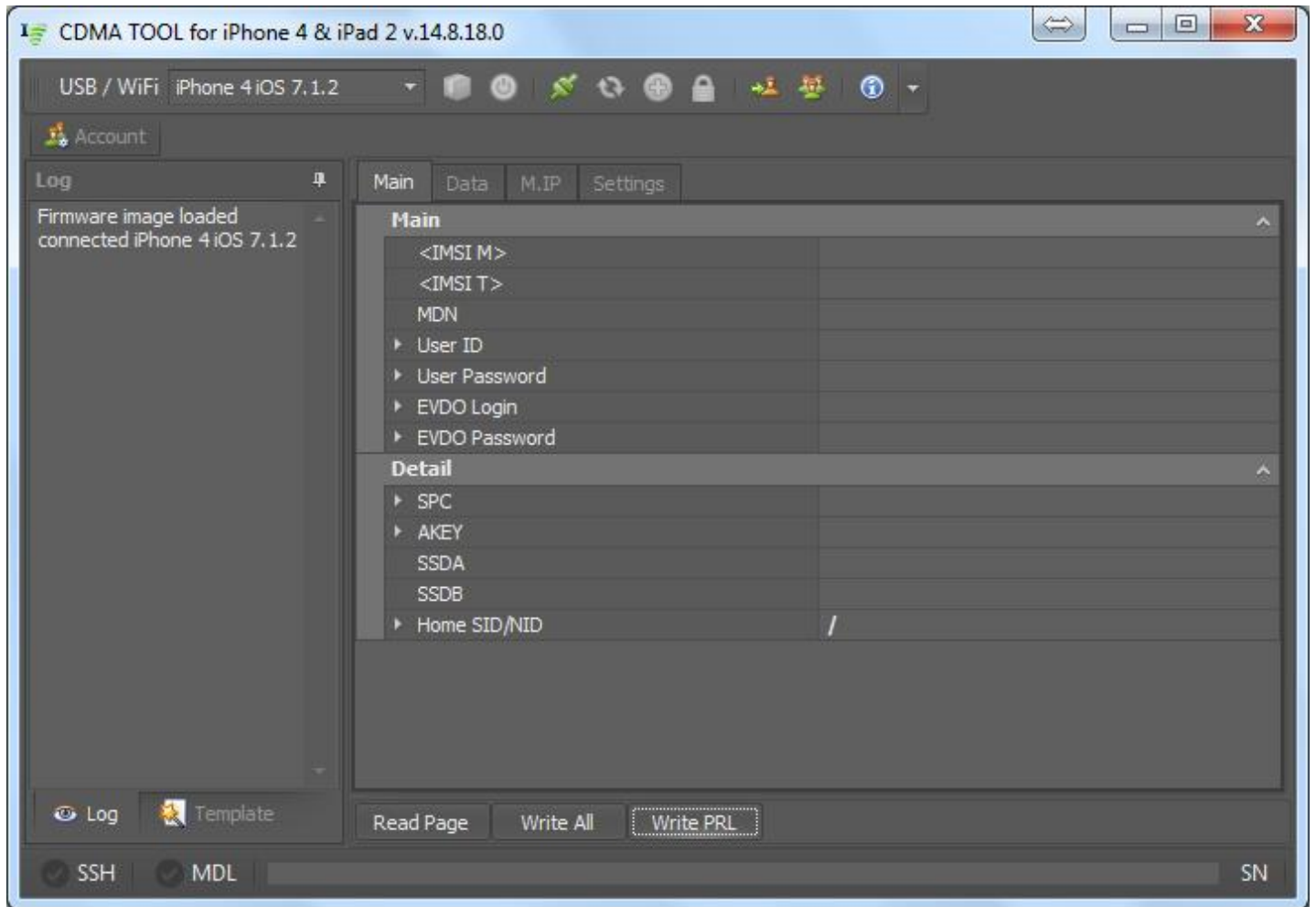


iDFS CDMA TOOL

Professional CDMA Software for Apple devices

iDFS CDMA Tool



What do you need to have before flashing:

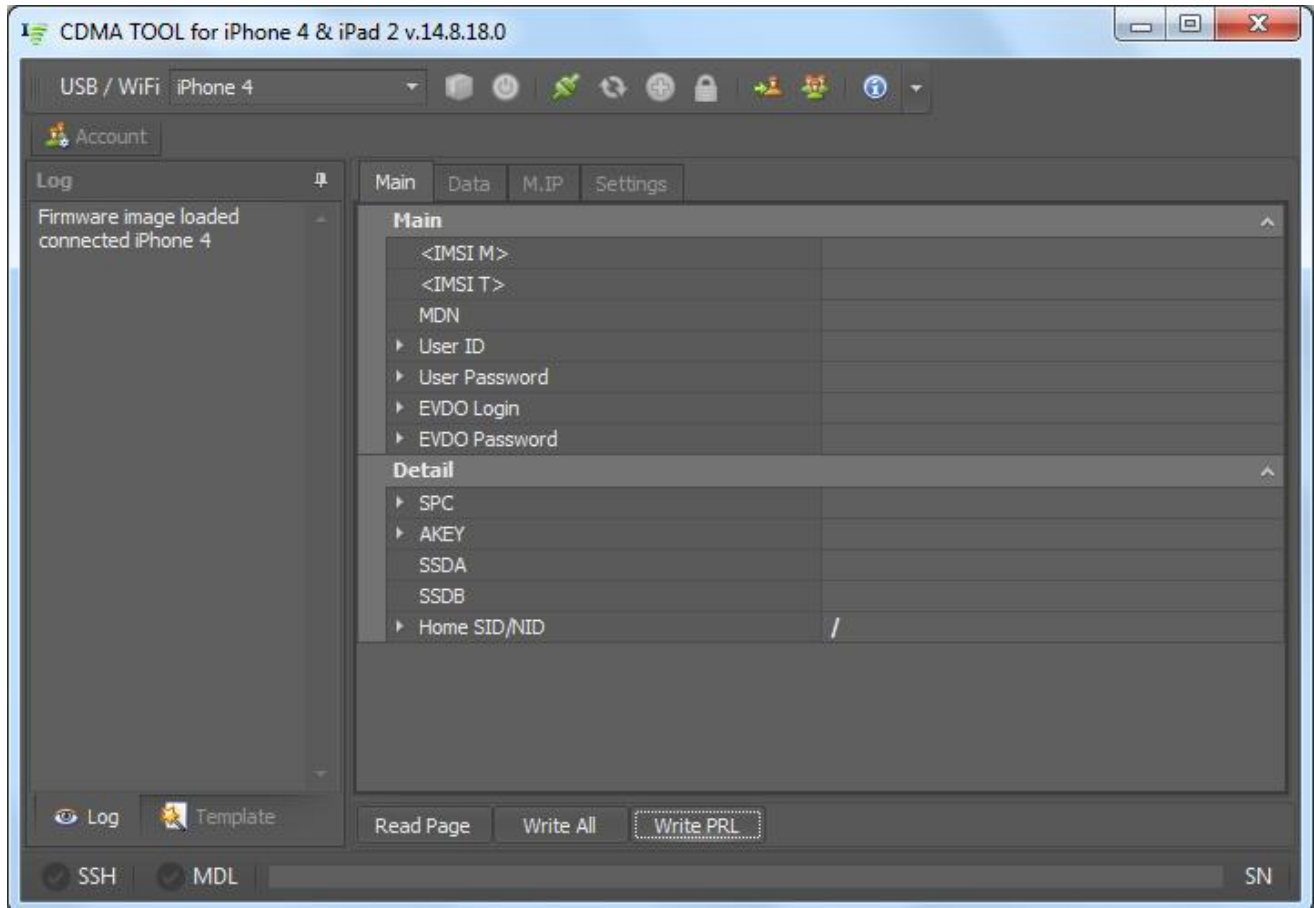
1. iPhone 4 (A1349) or iPad 2 (A1397)
2. Original Apple USB cable
3. iTunes installed

Contents

1. Connecting to iDFS without jailbreak	3
2. Connecting to iDFS with jailbreak	7
3. Account iDFS	10
4. Connecting to iDFS	11
5. Settings iDFS	13
6. Configuring carrier	14
7. Connection errors	17

[How to flash the iPhone 4 without jailbreaking](#)

1. Restore iOS via iTunes
2. Allow access to the device for your PC
3. Run [iDFS](#)



4. Turn off your iPhone and enter into **DFU mode**

Plug your device into your computer with a USB cable.

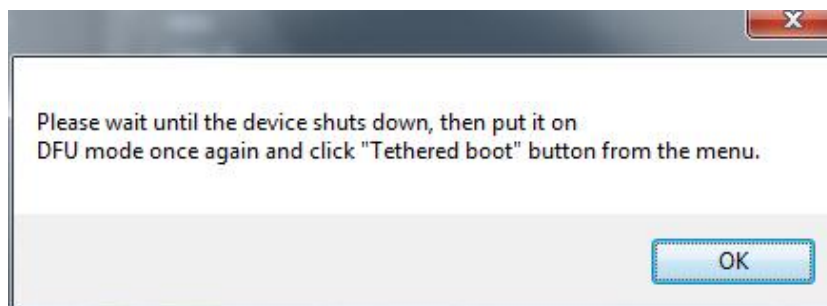
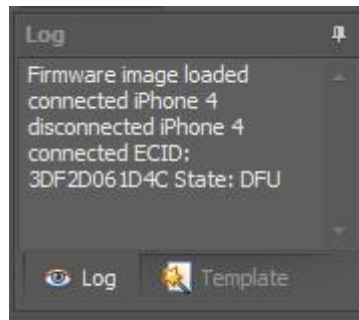
Turn off the device.

Hold the Power button for 3 seconds.

Hold the Home and Power buttons for 10 seconds.

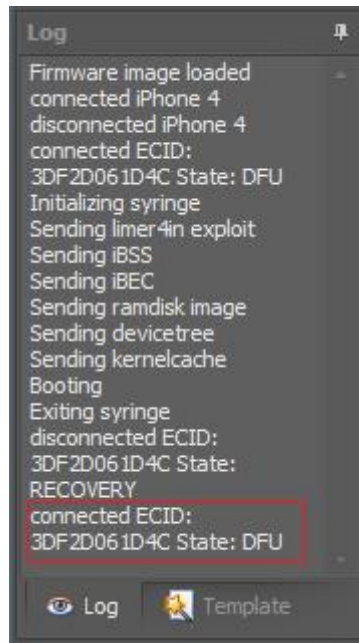
Release the Power button but keep holding the Home button.

6. Click «**Install SSH bundle**»



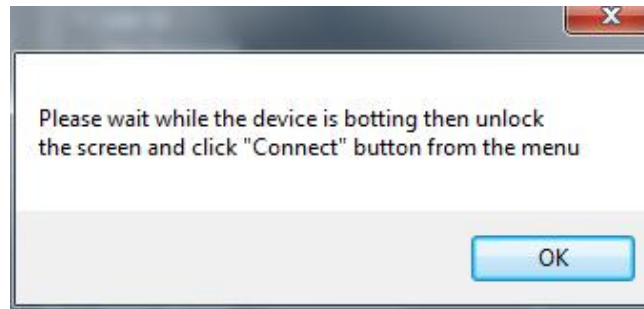
7. Enter again iPhone into **DFU mode**

*Plug your device into your computer with a USB cable.
Turn off the device.
Hold the Power button for 3 seconds.
Hold the Home and Power buttons for 10 seconds.
Release the Power button but keep holding the Home button.*



8. Click «Tethered boot»





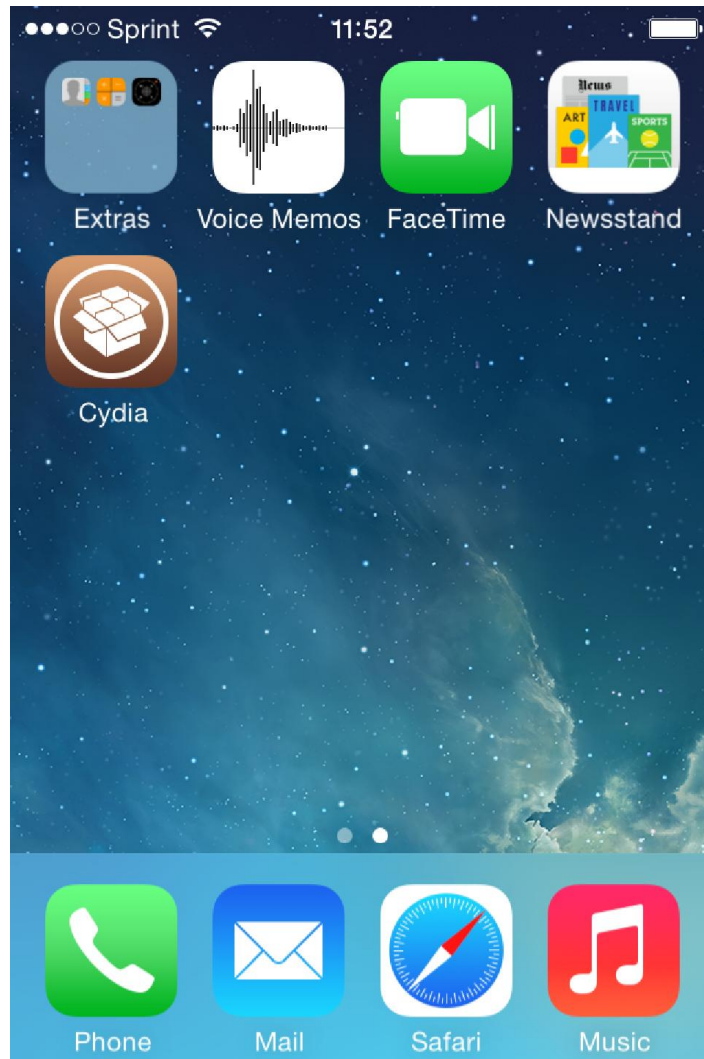
10. Wait booting the iPhone and press «**Connect**»

11. Done. Connect to [iDFS](#) without jail breaking.

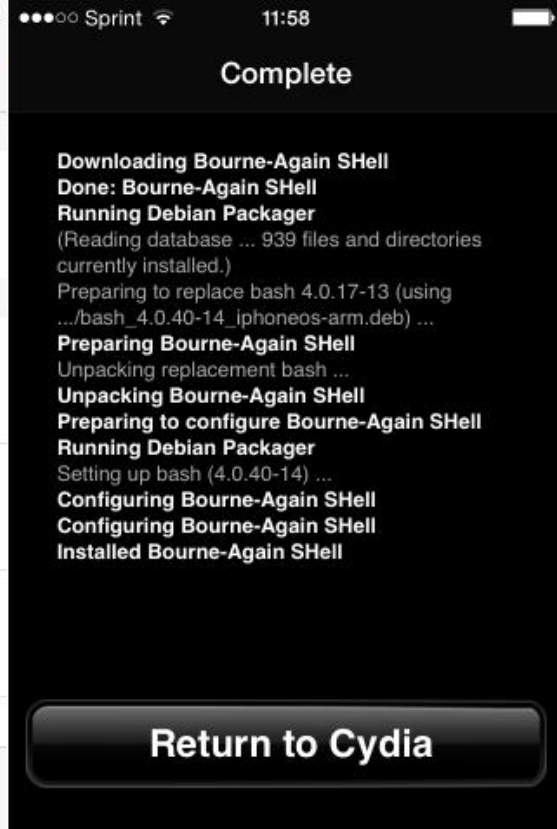
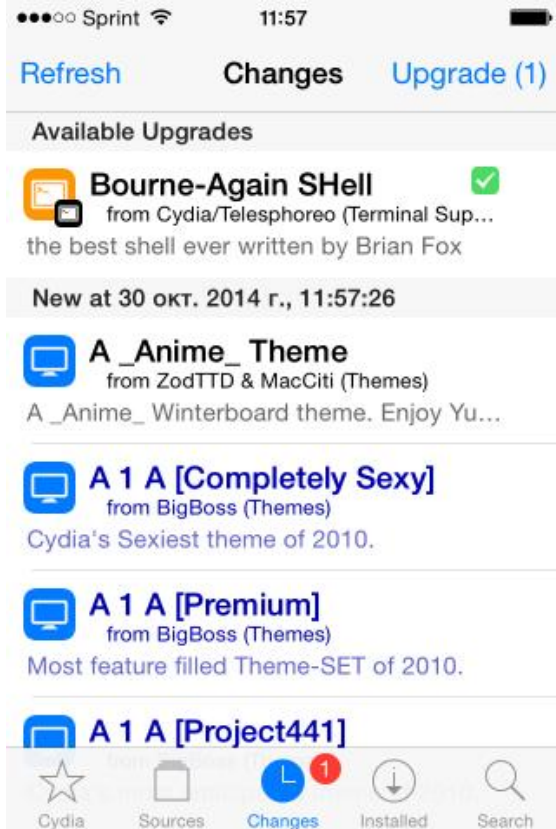
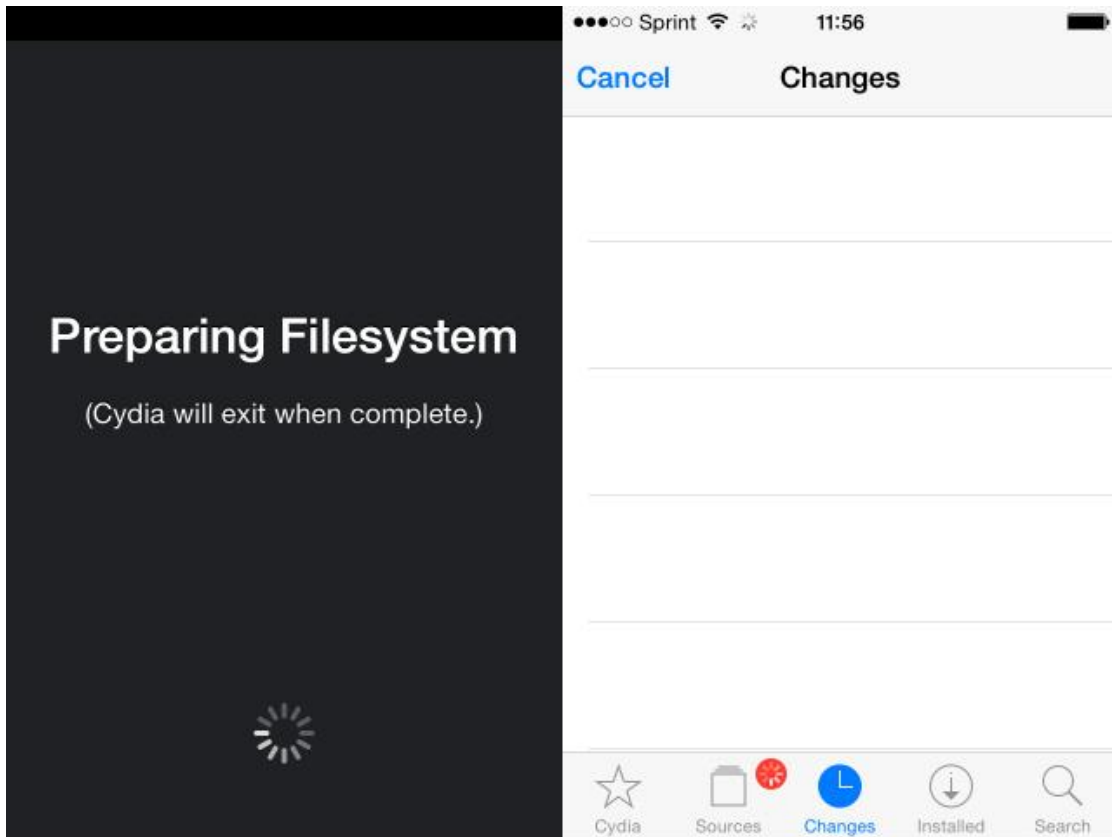
[Connecting to iDFS with jailbreak](#)

Install **Jailbroken** (*evasi0n7, absinthe, redsn0w, p0sixspwn, pangu* etc.). Download [here](#).

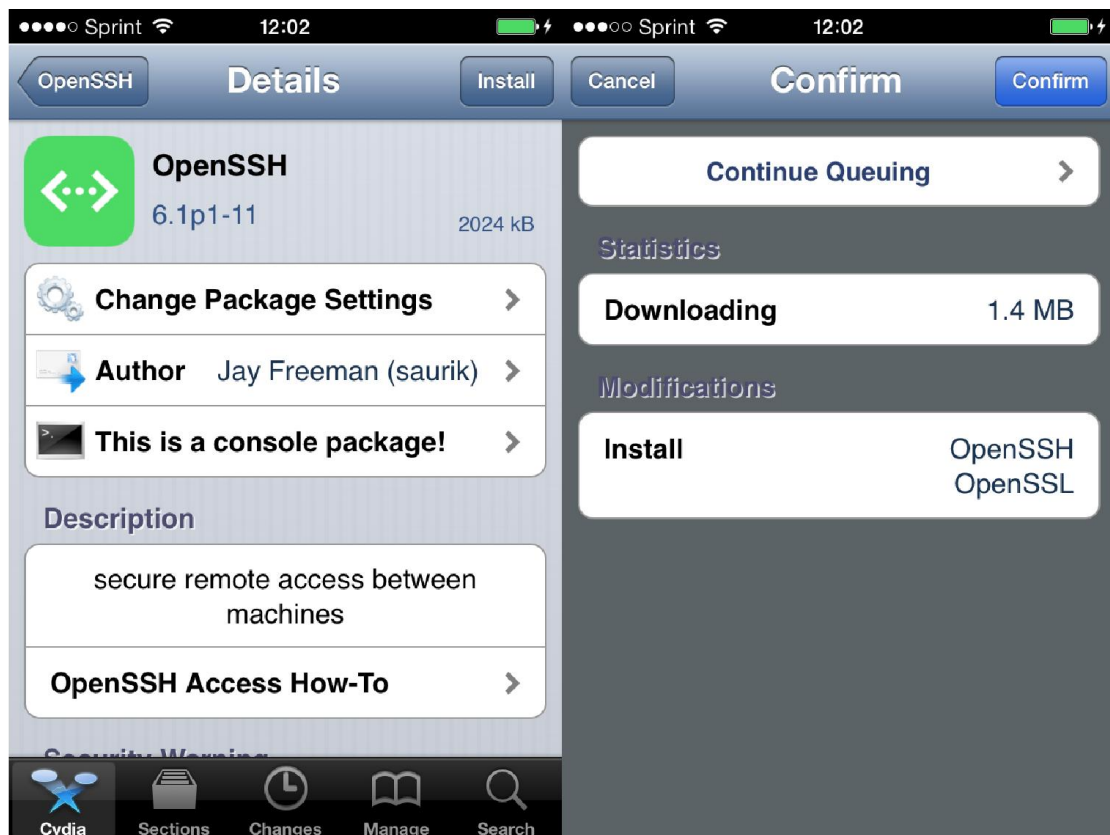
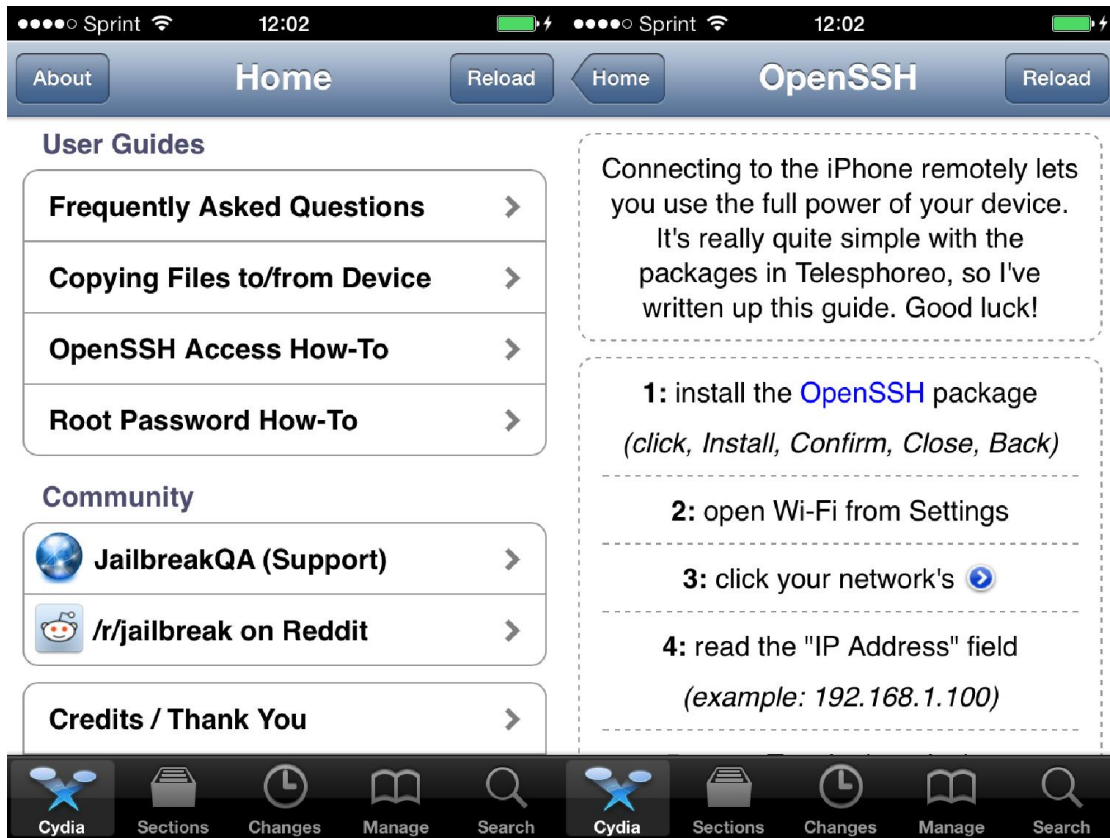
Run **Cydia**



Click on tab **Change** and press the **Refresh** button. Install the required application.



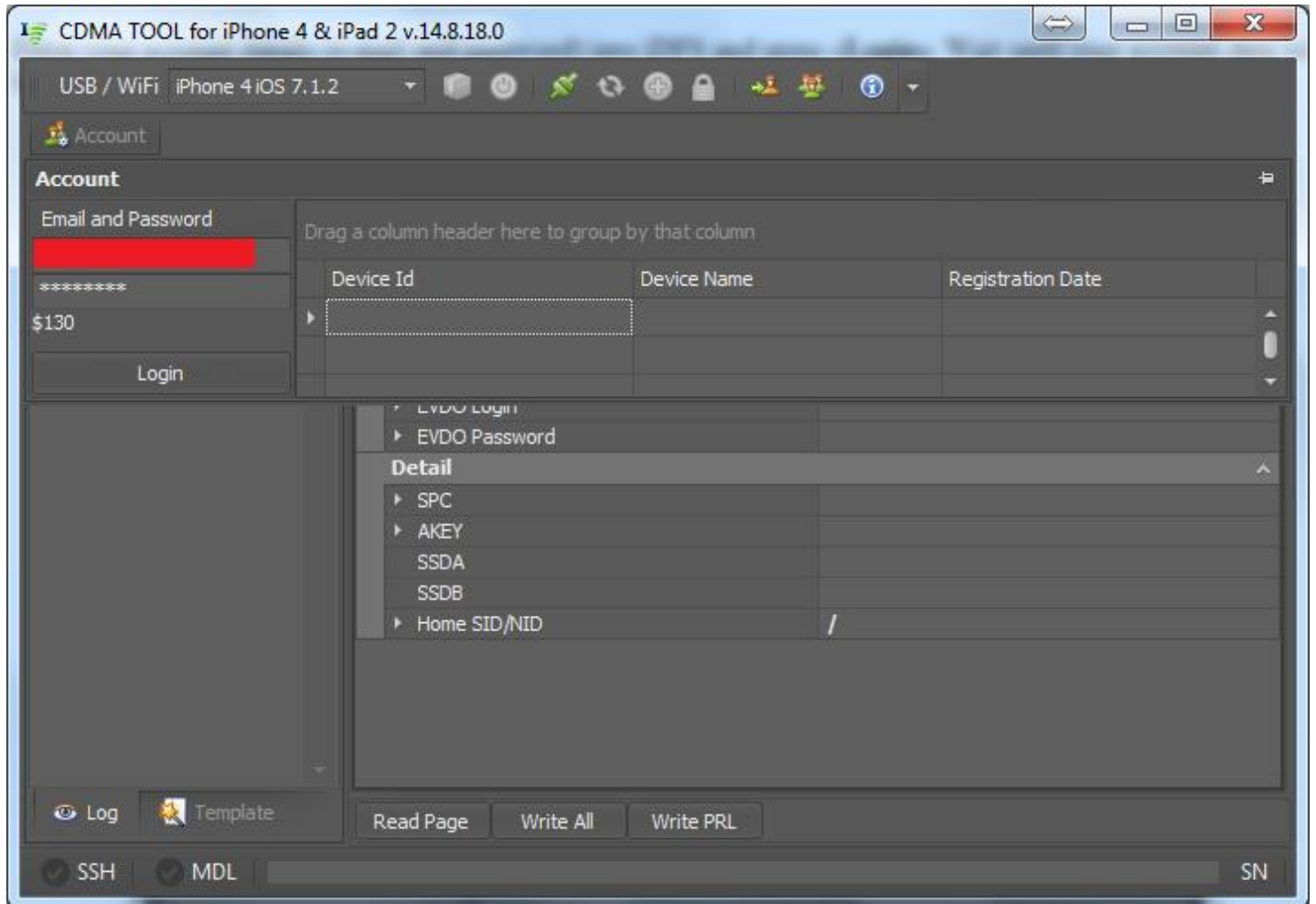
After that, install **OpenSSH (OpenSSH Access How-To > OpenSSH > Install > Confirm)**



Connect **iPhone 4 (A1349)** or **iPad 2 (A1397)** to USB or Wi-Fi.

[Account iDFS CDMA TOOL](#)

Enter your account details (e-mail and password) into **iDFS** and press «**Login**». Wait until your account data will be synchronized. If you are not registered, you must register on the site www.cdmatool.com



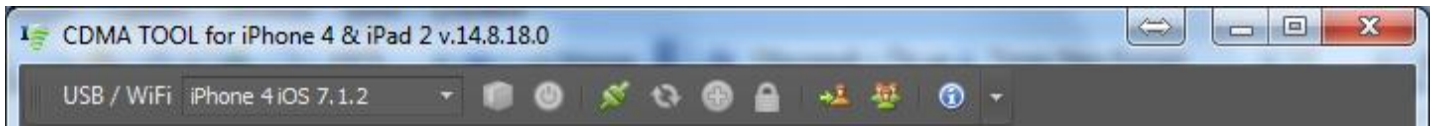
Connect Apple to iDFS CDMA TOOL

Connect your device via USB. Device automatically will be recognized by **iDFS**. You can also connect via **Wi-Fi** by entering **IP** of your device.

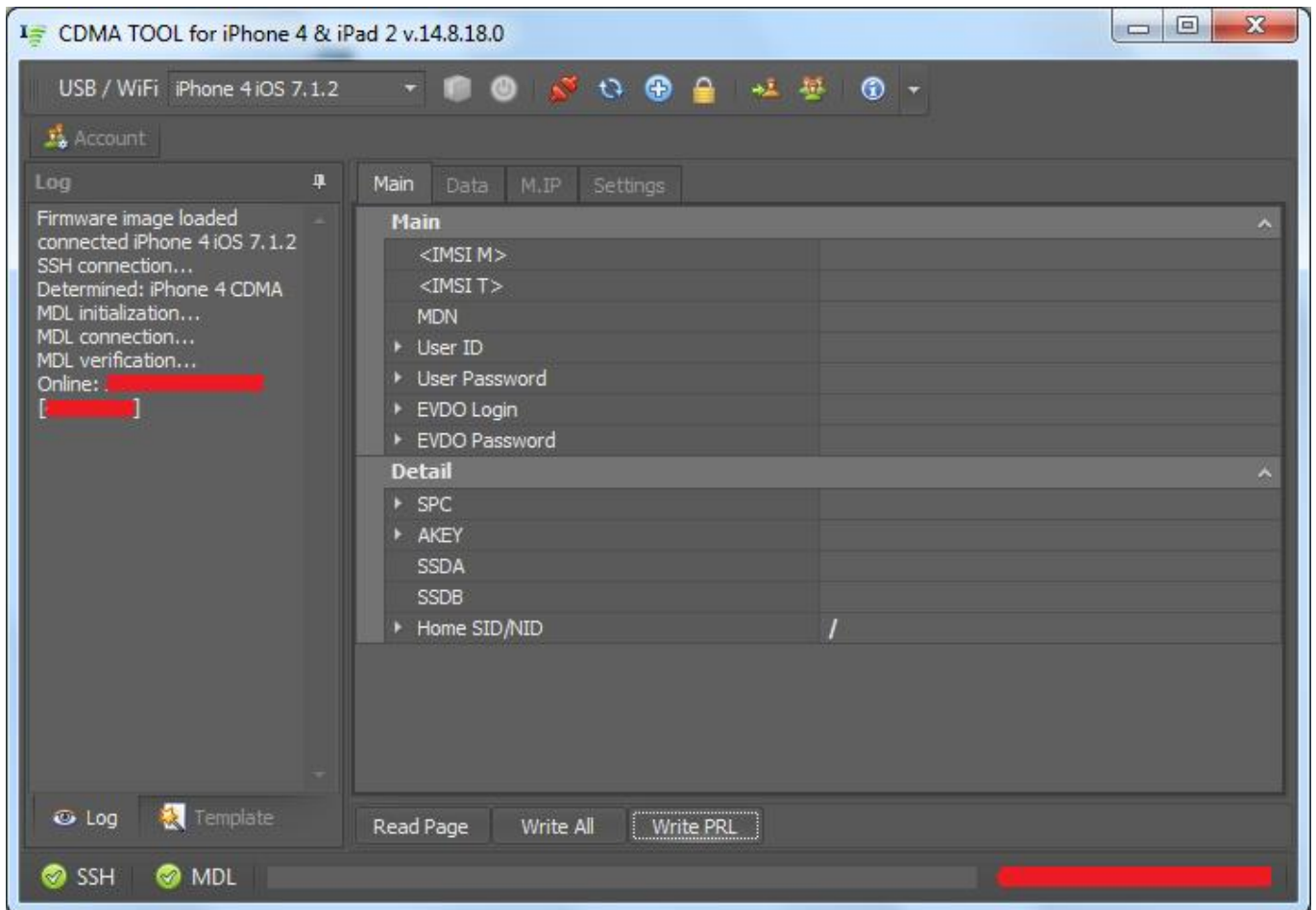
Wi-Fi connect:



USB connect:



To connect, click on the icon "**Connect\Disconnect**"

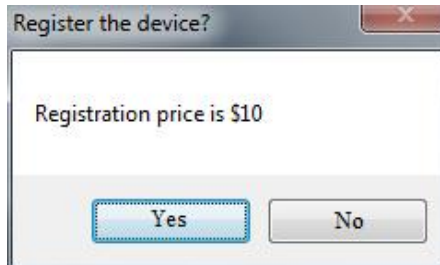


Activate your Apple **MEID** by pressing «**Activate**» button.

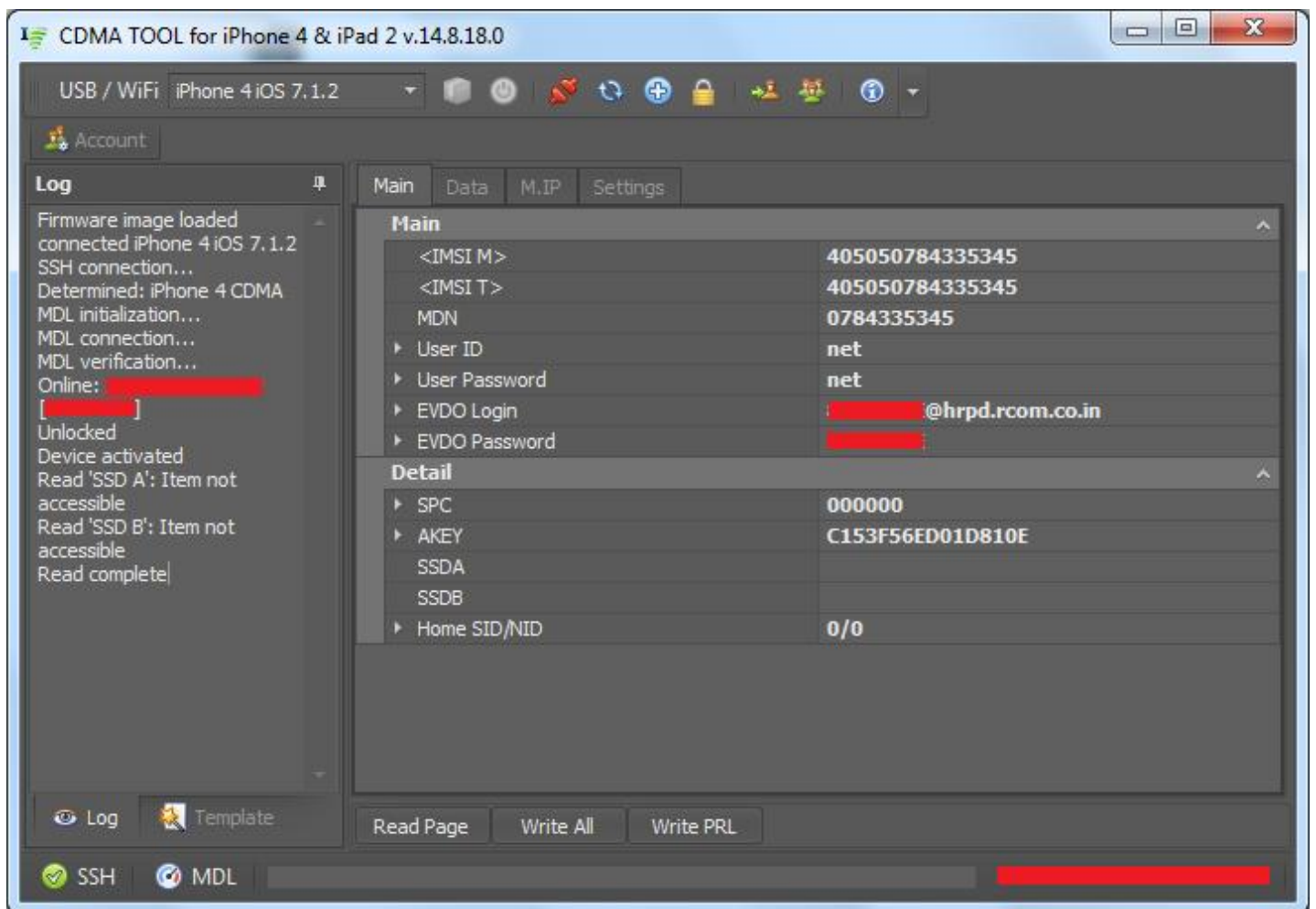
Professional CDMA Tool User Manual



Confirm:

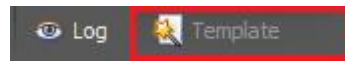


After activation [iDFS](#) can read and write data from your device.

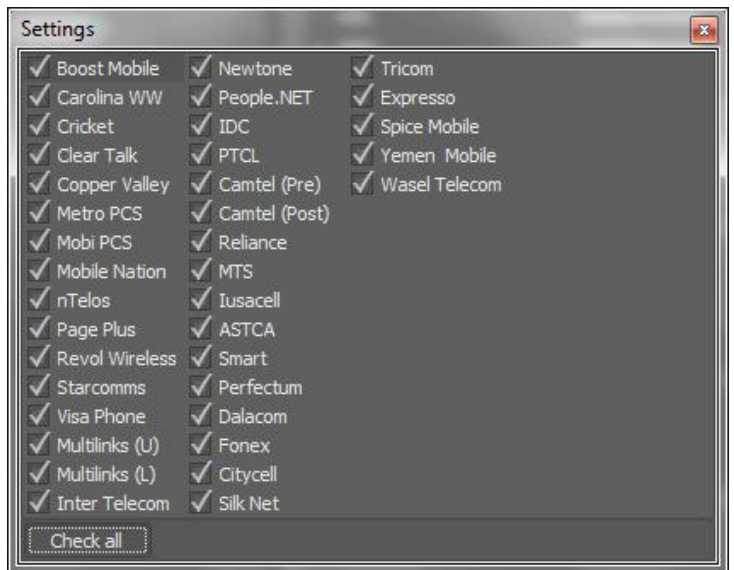
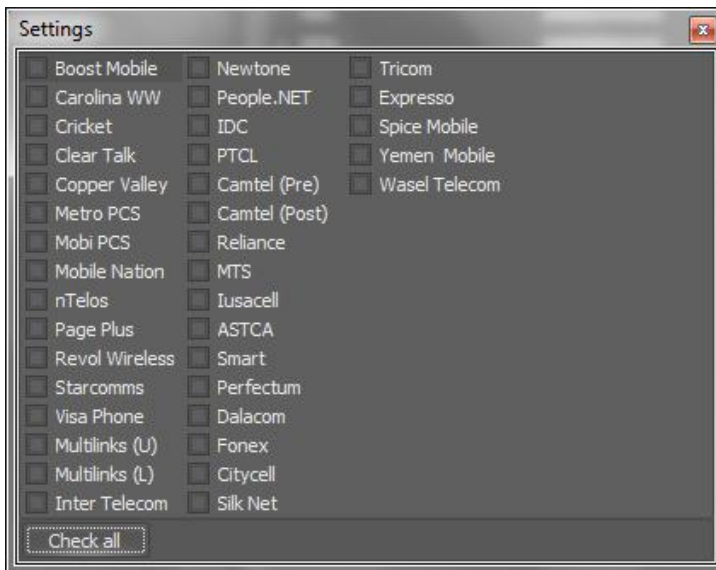
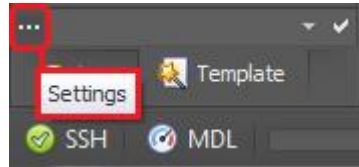


Settings iDFS CDMA TOOL

Select destination carriers you are going to use:



Go to settings and select carriers:



Configuring carrier CDMA TOOL

The main menu items **IDFS**:

Main:

IMSI M\IMSI T\MDN\User ID\User Password\Evdo login\Evdo Password\ SPC\Akey\Home SID/NID:

Main	
<IMSI M>	
<IMSI T>	
MDN	
▶ User ID	
▶ User Password	
▶ EVDO Login	
▶ EVDO Password	
Detail	
▶ SPC	
▶ AKEY	
SSDA	
SSDB	
▶ Home SID/NID	/

Enter the required information **IMSI (IMSI M and IMSI T)** and **MDN**

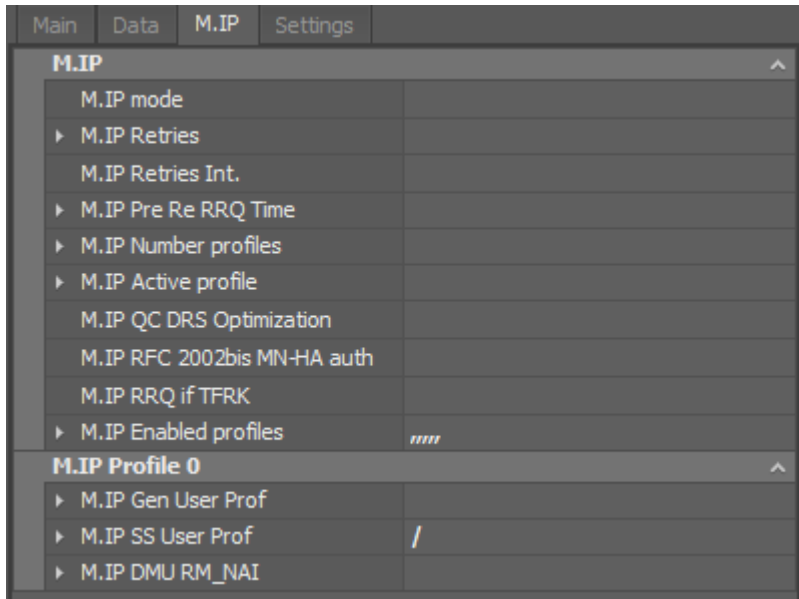
Data:

PAP User ID\PAP Password\PPP User ID\PPP Password and settings HRPD:

Data	
▶ PAP User Id	
▶ PAP Password	
▶ PPP User Id	
▶ PPP Password	
▶ DS SIP NAI	
HRPD	
▶ HDR AN Auth NAI	
▶ HDR AN Auth Password	
▶ HDR AN PPP User Id	
▶ HDR AN PPP Password	
▶ HDR AN Auth Password Long	
▶ HDR AN Auth User Id Long	

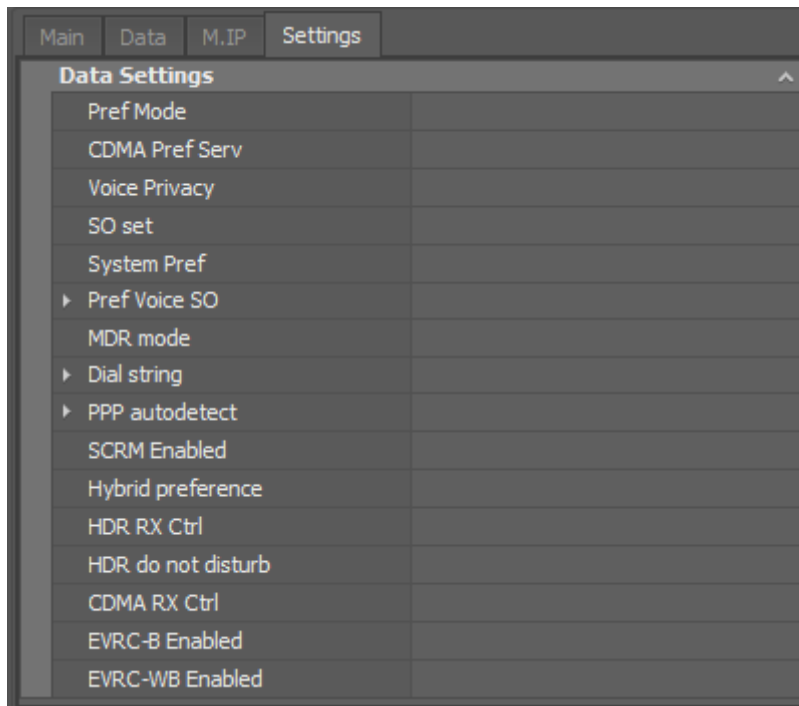
M.IP:

M.IP mode, M.IP profile:

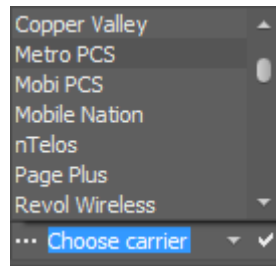


Settings:

Pref mode, Dial string and etc:



After entering the **IMSI** and **MDN**, you must choose from a list carrier submitted by:



Choose the carrier you want to program and click "**Ok**". **IDES** will automatically fill in all the necessary data needed in the fields.

Then You can select **PRL** - click on "**Write PRL**" and specify the PRL path.

Click «**Write PRL**» and select your PRL:

*PRL write: Ok
PRL write complete*

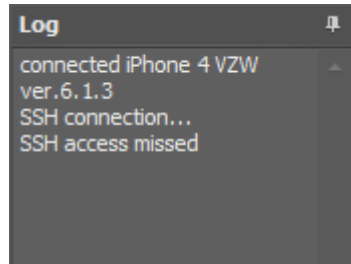
Carrier Setup completed, left click "**Write**"!

Status bar displays read/write progress:

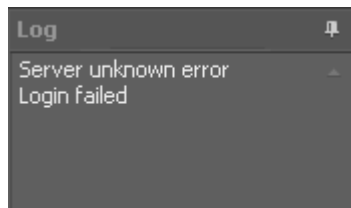


[Connection errors CDMA TOOL](#)

Error «**Open SSH missed**» - OpenSSH is not installed or device not booted with “**JustBoot**” method



Error «**Server unknown error**» - [iDFS](#) can not connect to the server. Check your Internet.



Find us on the web:

Follow the news:



Video manuals:



Official website:

